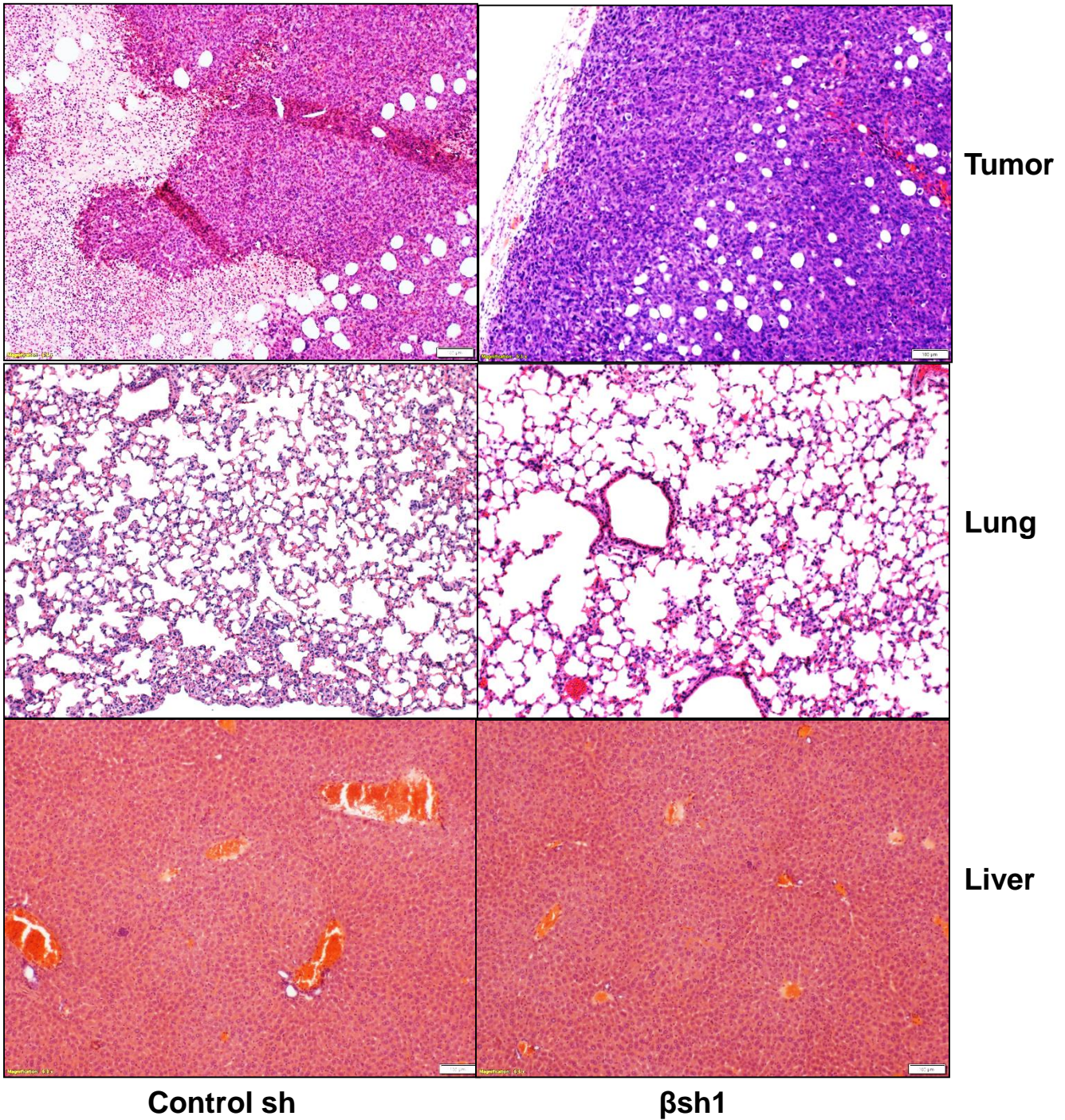


Supplementary Figure 5a: Line graph showing xenograft tumor growth rate induced by intramammary transplantation of control and β -catenin silenced (β sh1 and β sh2) cells derived from the MDA-MB468 TNBC cell line. Data shown is mean \pm SEM of tumor volume from seven mice in each experimental group.



Supplementary Figure 5b: Representative H and E stained tumor (top), lung (middle), and liver (bottom) sections from control and β -catenin silenced (β sh1) mice transplanted with the MDA-MB468 cells. The pictures were collected at $5 \times$ magnification. The white bar at the bottom right hand side of each picture represents $100 \mu\text{m}$.