

Figure S1. FACS sorting of HER2-enriched fraction of SKBR3 and analysis of its levels in derivatives.

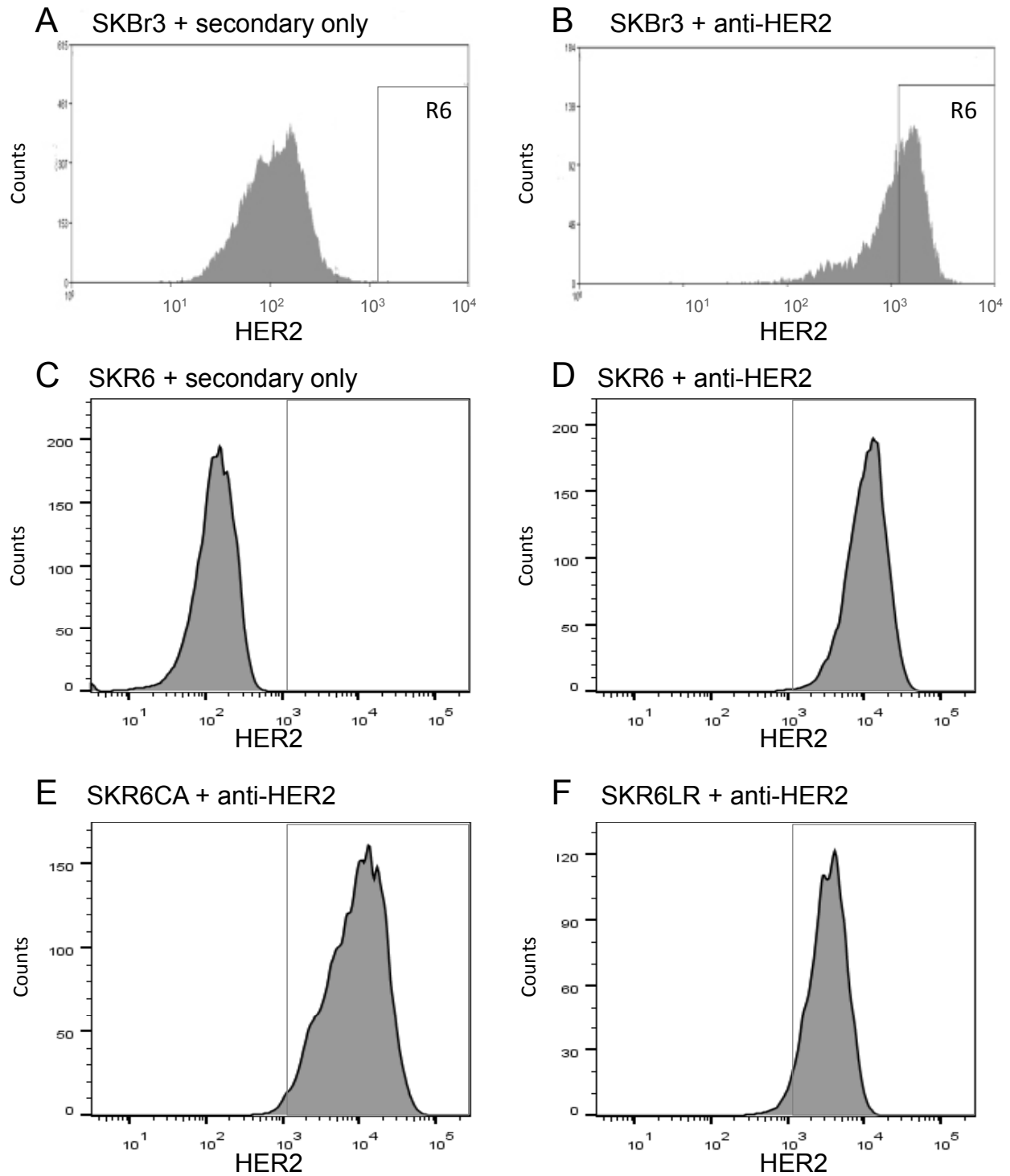


Figure S2. Inhibition of HER2 signaling by Lapatinib in SKR6 and SKR6LR cells.

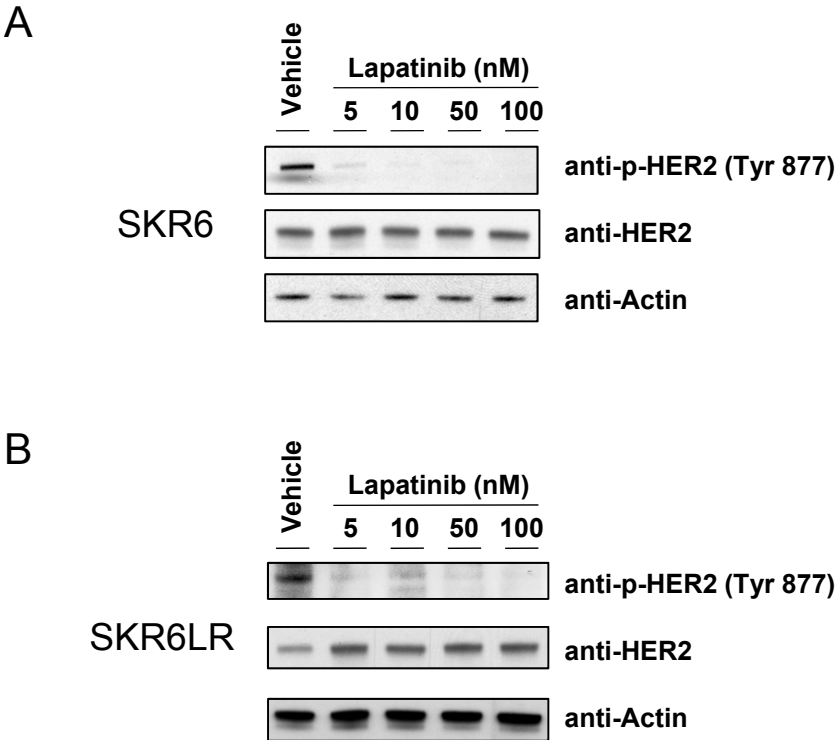


Figure S3. Xenograft histopathology.

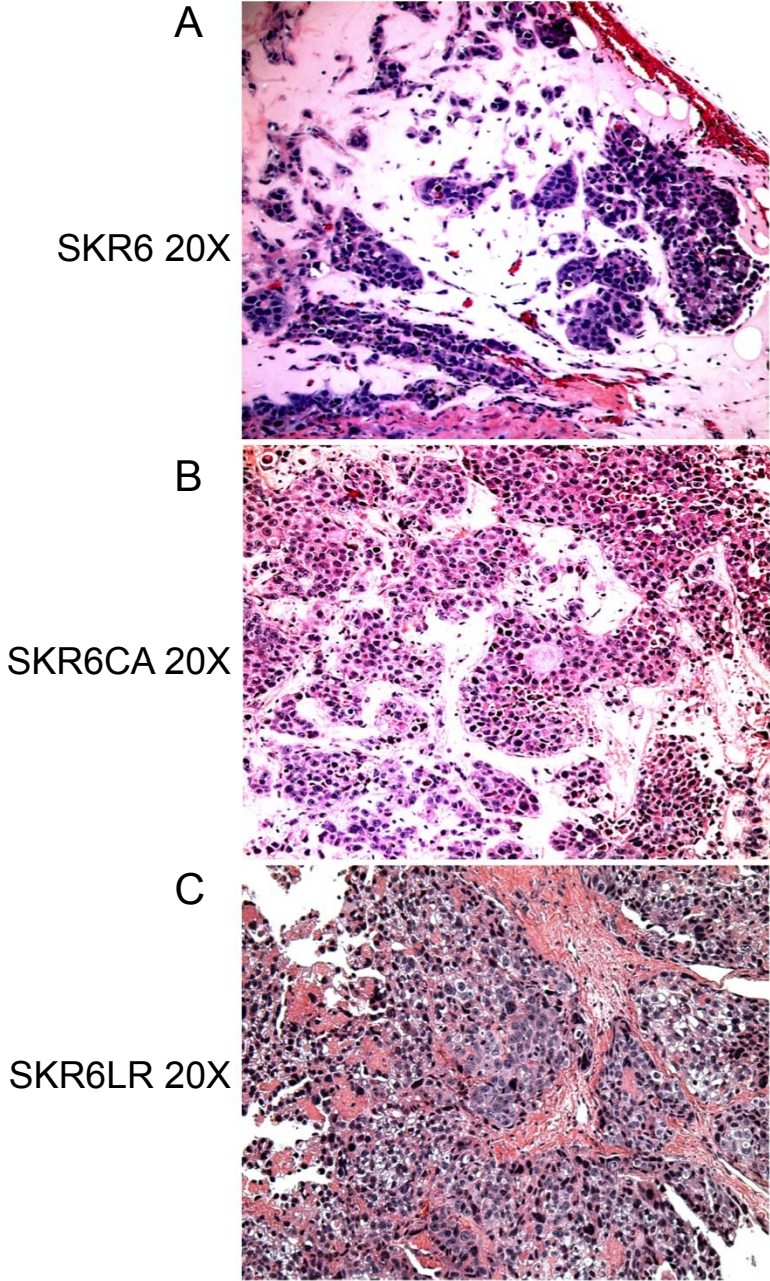
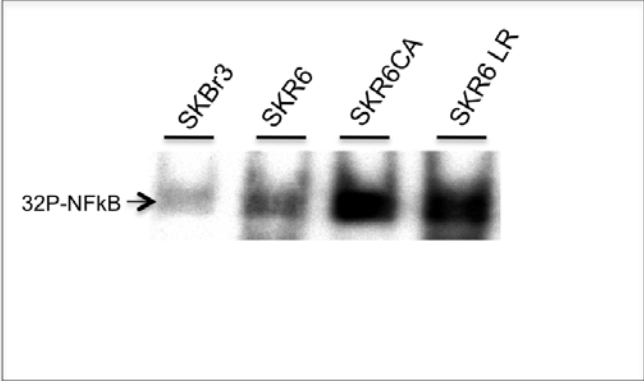


Figure S4 NF-kB DNA binding activity by electrophoretic mobility shift assay (EMSA).

A NF-kB DNA Binding Activity in SKR6 and derivatives



B NF-kB DNA Binding Activity in SKR6 Xenografts derivatives

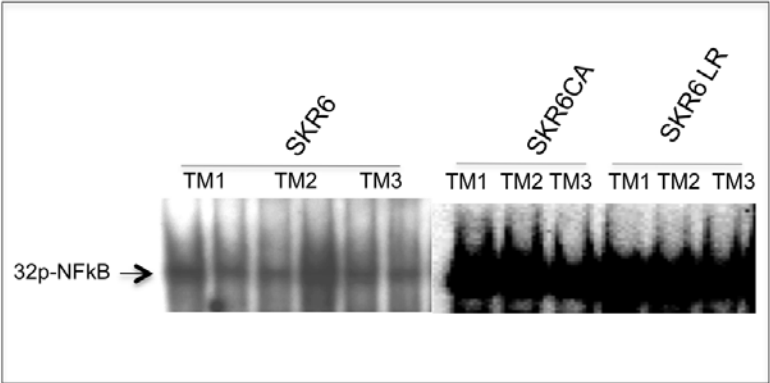


Figure S5. Geno Ontology (GO) terms for genes found in clusters II, III and IV from Figure 5B

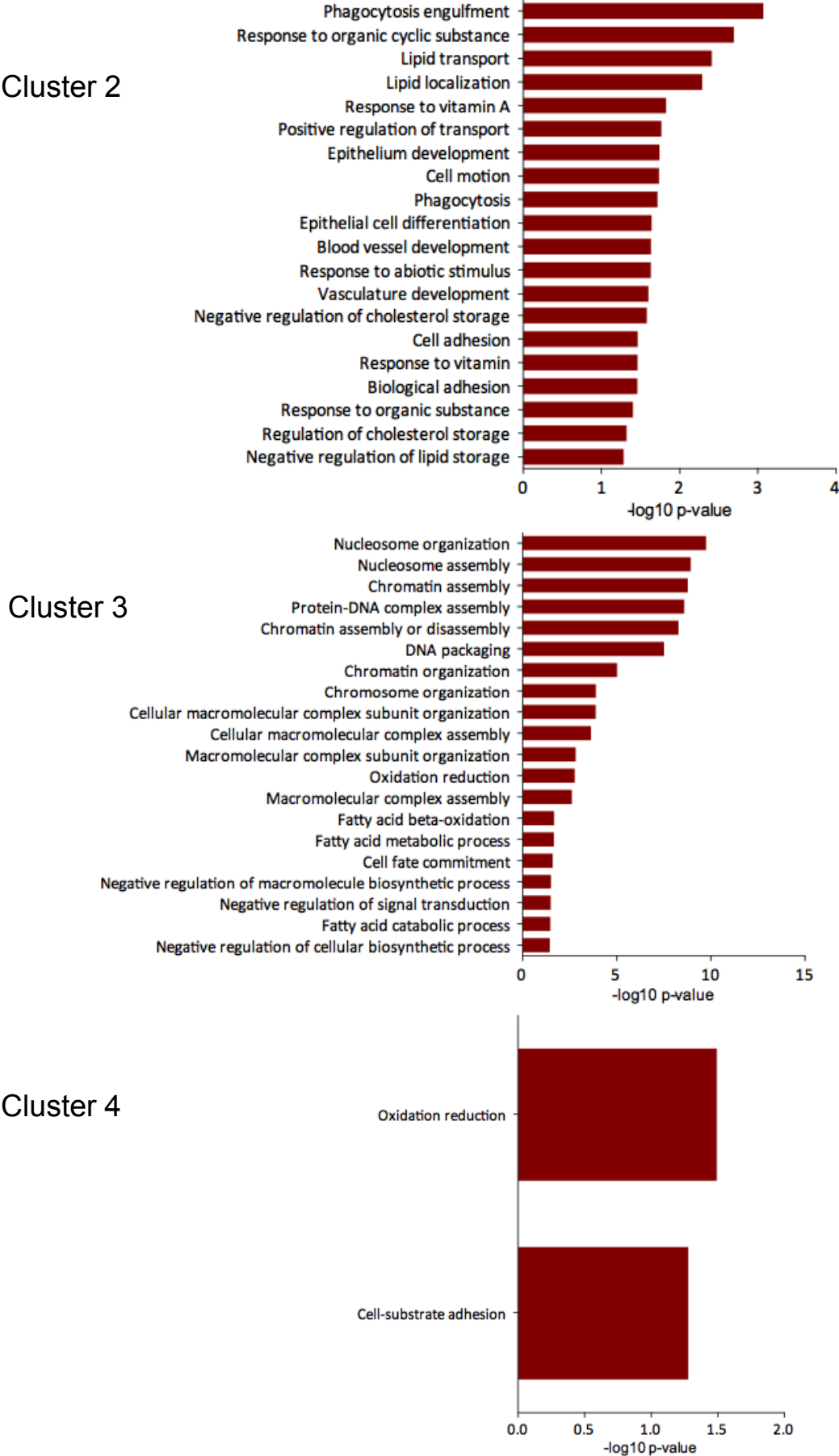


Figure S6. Hypothesis: Anti-apoptosis driven by constitutive NF- κ B activation accelerates tumor growth and evades therapy resulting in poor clinical outcome.

