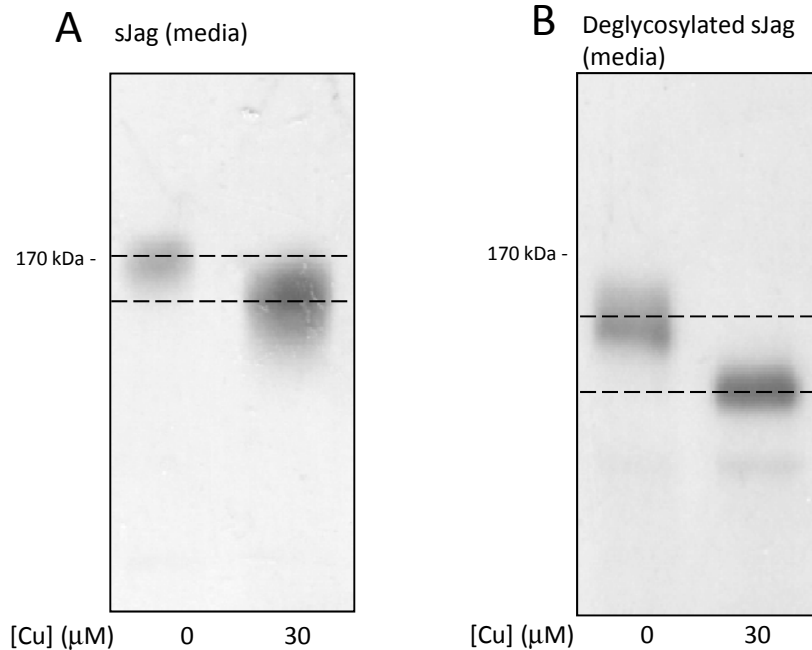


Supplementary Figure S2



Supplementary Figure S2: The Jagged1 ectodomain generated in the presence of copper is smaller than constitutively-generated sJag. HEK-Jagged1 cells were incubated in the absence or presence of copper (30 μM) for 5 h. **(A)** Concentrated conditioned medium was separated by extended electrophoresis (involving running gels for an additional 15 min following the elution of the dye front from the base of the plates) followed by immunoblotting the samples with an anti-Jagged1 ectodomain antibody. **(B)** Concentrated conditioned medium was subjected to enzymatic deglycosylation prior to extended electrophoresis and immunoblotting with the anti-Jagged1 ectodomain antibody. A clear size difference is apparent between the ectodomains shed in the presence and absence of copper regardless of whether the samples were deglycosylated.