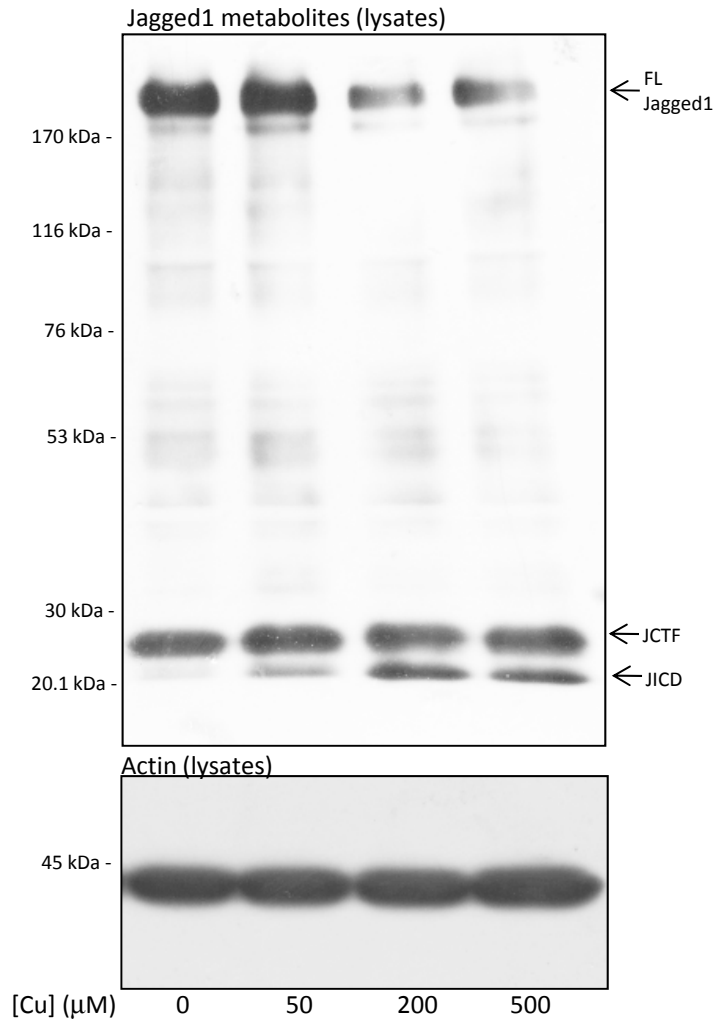


Supplementary Figure S1



Supplementary Figure S1: Copper-mediated Jagged1 shedding is accompanied by reciprocal decreases in cell-associated holoprotein only at higher, physiologically irrelevant, metal concentrations. Cells were incubated for 5 h in the presence of the copper concentrations indicated. Lysates were then prepared as described in Materials and Methods and immunoblotted with anti-Jagged1 C-terminal antibody in order to detect full-length Jagged1, JCTF and JICD. Lysate samples were also immunoblotted with anti-actin.