

## MOLECULAR CANCER RESEARCH

## TABLE OF CONTENTS

## HIGHLIGHTS

1757 Selected Articles from This Issue

*MCR*RapidIMPACT

1759 Dephosphorylation of the Proneural Transcription Factor ASCL1 Re-Engages a Latent Post-Mitotic Differentiation Program in Neuroblastoma

**A C** Fahad R. Ali, Daniel Marcos, Igor Chernukhin, Laura M. Woods, Lydia M. Parkinson, Luke A. Wylie, Tatiana D. Papkovskaia, John D. Davies, Jason S. Carroll, and Anna Philpott

## CANCER GENES AND NETWORKS

1767 Targeting TSLP-Induced Tyrosine Kinase Signaling Pathways in *CRLF2*-Rearranged Ph-like ALL  
Keith C.S. Sia, Ling Zhong, Chelsea Mayoh, Murray D. Norris, Michelle Haber, Glenn M. Marshall, Mark J. Raftery, and Richard B. Lock

1777 Loss of SWI/SNF Chromatin Remodeling Alters NRF2 Signaling in Non-Small Cell Lung Carcinoma  
Shujie Song, Vinh Nguyen, Travis Schrank, Kathleen Mulvaney, Vonn Walter, Darmood Wei, Tess Orvis, Nisarg Desai, Jiren Zhang, D. Neil Hayes, Yanfang Zheng, Michael B. Major, and Bernard E. Weissman

1789 Destrin Contributes to Lung Adenocarcinoma Progression by Activating Wnt/ $\beta$ -Catenin Signaling Pathway  
**A C** Hui-Juan Zhang, Wen-Jing Chang, Cai-Yun Jia, Ling Qiao, Jing Zhou, Qing Chen, Xiao-Wei Zheng, Jian-Hua Zhang, Hong-Chao Li, Zheng-Yan Yang, Zhong-Hua Liu, Guang-Chao Liu, Shao-Ping Ji, and Feng Lu

1803 Role of TET1 and 5hmC in an Obesity-Linked Pathway Driving Cancer Stem Cells in Triple-Negative Breast Cancer  
Bin Bao, Emily A. Teslow, Cristina Mitrea, Julie L. Boerner, Greg Dyson, and Aliccia Bollig-Fischer

## CANCER “-OMICS”

1815 Distinct Genomic Alterations in Prostate Tumors Derived from African American Men  
Wennuan Liu, S. Lilly Zheng, Rong Na, Lin Wei, Jishan Sun, Johnie Gallagher, Jun Wei, W. Kyle Resurreccion, Sarah Ernst, Karen S. Sfanos, William B. Isaacs, and Jianfeng Xu

## CELL FATE DECISIONS

1825 SOX9 Is Essential for Triple-Negative Breast Cancer Cell Survival and Metastasis  
**A C** Yanxia Ma, Jonathan Shepherd, Dekuang Zhao, Lakshmi Reddy Bollu, William M. Tahaney, Jamal Hill, Yun Zhang, Abhijit Mazumdar, and Powel H. Brown

1839  $\beta$ 2-adrenoreceptor Signaling Increases Therapy Resistance in Prostate Cancer by Upregulating MCL1  
Sazzad Hassan, Ashok Pullikuth, Kyle C. Nelson, Anabel Flores, Yelena Karpova, Daniele Baiz, Sinan Zhu, Guangchao Sui, Yue Huang, Young A. Choi, Ralph D'Agostino Jr, Ashok Hemal, Urs von Holzen, Waldemar Debinski, and George Kulik

## METABOLISM

1849 Secreted Factors from Adipose Tissue Reprogram Tumor Lipid Metabolism and Induce Motility by Modulating PPAR $\alpha$ /ANGPTL4 and FAK  
Christina Blücher, Sabine Iberl, Nancy Schwagarus, Silvana Müller, Gerhard Liebisch, Marcus Höring, Maria Soledad Hidrobo, Josef Ecker, Nick Spindler, Arne Dietrich, Ralph Burkhardt, and Sonja C. Stadler

## SIGNAL TRANSDUCTION AND FUNCTIONAL IMAGING

1863 G-Protein-Coupled Estrogen Receptor 1 Promotes Gender Disparities in Hepatocellular Carcinoma via Modulation of SIN1 and mTOR Complex 2 Activity  
Guanying Feng, Jingshu Cai, Yunchuanxiang Huang, Xianjun Zhu, Bo Gong, Zhenglin Yang, Chunhong Yan, Zhuowei Hu, Lu Yang, and Ziyang Wang

# TABLE OF CONTENTS

**1876**     **Autocrine Leukemia Inhibitory Factor Promotes Esophageal Squamous Cell Carcinoma Progression via Src Family Kinase-Dependent Yes-Associated Protein Activation**

Tetsuro Kawazoe, Hiroshi Saeki, Eiji Oki, Yoshinao Oda, Yoshihiko Maehara, Masaki Mori, and Koji Taniguchi

**TUMOR MICROENVIRONMENT AND IMMUNOBIOLOGY**

**1889**     **Neoplastic-Stromal Cell Cross-talk Regulates Matrisome Expression in Pancreatic Cancer**

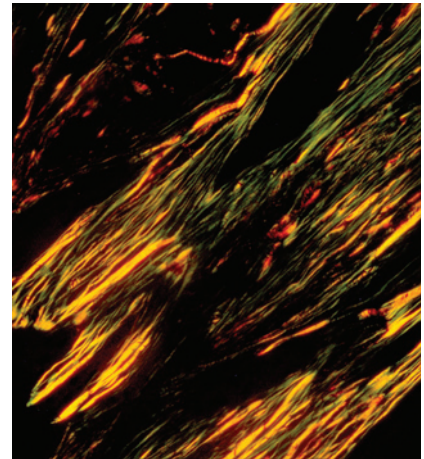
Kim C. Honselmann, Pascal Finetti, David J. Birnbaum, Christian S. Monsalve, Ulrich F. Wellner, Sebastian K.S. Begg, Akifumi Nakagawa, Thomas Hank, Annie Li, Mathew A. Goldsworthy, Himanshu Sharma, François Bertucci, Daniel Birnbaum, Eric Tai, Matteo Ligorio, David T. Ting, Oliver Schilling, Martin L. Biniousek, Peter Bronsert, Cristina R. Ferrone, Tobias Keck, Mari Mino-Kenudson, Keith D. Lillemoe, Andrew L. Warshaw, Carlos Fernández-del Castillo, and Andrew S. Liss

**AC** icon indicates AuthorChoice

For more information please visit [www.aacrjournals.org](http://www.aacrjournals.org)

## ABOUT THE COVER

Tumor stroma with an abundance of extracellular matrix (ECM) is characteristic of pancreatic cancer. The cover depicts collagen birefringence from polarized light microscopy of a picosirius red-stained section of a human pancreatic tumor. Type I collagen appear as yellow-red fibers while Type III collagen fibers appear green. In this issue, Honselmann and colleagues identified the BET family of chromatin adaptor proteins as key regulators of the ECM transcriptional program. Further, the authors demonstrated that pharmacological inhibition of these epigenetic regulators alters the structure of collagen fibers in aggressive tumors to a structure more similar to that observed in tumors from patients with better survival. See the article on page 1889 for more information.



# Molecular Cancer Research

18 (12)

*Mol Cancer Res* 2020;18:1757-1902.

**Updated version** Access the most recent version of this article at:  
<http://mcr.aacrjournals.org/content/18/12>

**E-mail alerts** [Sign up to receive free email-alerts](#) related to this article or journal.

**Reprints and Subscriptions** To order reprints of this article or to subscribe to the journal, contact the AACR Publications Department at [pubs@aacr.org](mailto:pubs@aacr.org).

**Permissions** To request permission to re-use all or part of this article, use this link <http://mcr.aacrjournals.org/content/18/12>. Click on "Request Permissions" which will take you to the Copyright Clearance Center's (CCC) Rightslink site.