

Highlights of This Issue 1333

MINIREVIEW

- 1335** Understanding the Histone DNA Repair Code: H4K20me2 Makes Its Mark
Karissa L. Paquin and Niall G. Howlett

PERSPECTIVE

- 1346** Cancer as a Social Dysfunction—Why Cancer Research Needs New Thinking
Robert Axelrod and Kenneth J. Pienta

CELL DEATH AND SURVIVAL

- 1348** Autophagy, Cell Viability, and Chemoresistance Are Regulated By miR-489 in Breast Cancer
Mithil Soni, Yogin Patel, Eleni Markoutsas, Chunfa Jie, Shou Liu, Peisheng Xu, and Hexin Chen
- 1361** Spindle Assembly Disruption and Cancer Cell Apoptosis with a CLTC-Binding Compound
Michael J. Bond, Marina Bleiler, Lauren E. Harrison, Eric W. Scocchera, Masako Nakanishi, Narendran G-Dayanan, Santosh Keshipeddy, Daniel W. Rosenberg, Dennis L. Wright, and Charles Giardina

CHROMATIN, EPIGENETICS, AND RNA REGULATION

- 1373** Nomogram Integrating Genomics with Clinicopathologic Features Improves Prognosis Prediction for Colorectal Cancer
Yongfu Xiong, Wenxian You, Min Hou, Linglong Peng, He Zhou, and Zhongxue Fu

DNA DAMAGE AND REPAIR

- 1385** Centrosome Linker-induced Tetraploid Segregation Errors Link Rhabdoid Phenotypes and Lethal Colorectal Cancers
Andrea Remo, Erminia Manfrin, Pietro Parcesepe, Alberto Ferrarini, Hye Seung Han, Ugnius Mickys, Carmelo Laudanna, Michele Simbolo, Donatella Malanga, Duarte Mendes Oliveira, Elisabetta Baritono, Tommaso Colangelo, Lina Sabatino, Jacopo Giuliani, Enrico Molinari, Marianna Garonzi, Luciano Xumerle, Massimo Delledonne, Guido Giordano, Claudio Ghimenton, Fortunato Lonardo, Fulvio D'angelo, Federica Grillo, Luca Mastracci, Giuseppe Viglietto, Michele Ceccarelli, Vittorio Colantuoni, Aldo Scarpa, and Massimo Pancione

METABOLISM

- 1396** SREBF1 Activity Is Regulated by an AR/mTOR Nuclear Axis in Prostate Cancer
Étienne Audet-Walsh, Mathieu Vernier, Tracey Yee, Chloé Laflamme, Susan Li, Yonghong Chen, and Vincent Giguère

GENOMICS

- 1406** Molecular Signature and Mechanisms of Hepatitis D Virus-Associated Hepatocellular Carcinoma
Giacomo Diaz, Ronald E. Engle, Ashley Tice, Marta Melis, Stephanie Montenegro, Jaime Rodriguez-Canales, Jeffrey Hanson, Michael R. Emmert-Buck, Kevin W. Bock, Ian N. Moore, Fausto Zamboni, Sugantha Govindarajan, David E. Kleiner, and Patrizia Farci

ONCOGENES AND TUMOR SUPPRESSORS

- 1420** Pattern-Specific Transcriptomics Identifies ASGR2 as a Predictor of Hematogenous Recurrence of Gastric Cancer
Haruyoshi Tanaka, Mitsuro Kanda, Takashi Miwa, Chie Tanaka, Daisuke Kobayashi, Shinichi Umeda, Masahiro Shibata, Masaya Suenaga, Norifumi Hattori, Masamichi Hayashi, Naoki Iwata, Suguru Yamada, Goro Nakayama, Michitaka Fujiwara, and Yasuhiro Kodera

Table of Contents

1430 Prostate-Derived Ets Factor (PDEF) Inhibits Metastasis by Inducing Epithelial/Luminal Phenotype in Prostate Cancer Cells



Fengtian Wang, Sweaty Koul, Prakash S.T. Shanmugam, Qin Dong, and Hari K. Koul

EDITORS NOTES

1441 Editor's Note: Targeting Nuclear Factor- κ B Activation Pathway by Thymoquinone: Role in Suppression of Antiapoptotic Gene Products and Enhancement of Apoptosis

1442 Editor's Note: Ursolic Acid Inhibits STAT3 Activation Pathway Leading to Suppression of Proliferation and Chemosensitization of Human Multiple Myeloma Cells

RETRACTIONS

1443 Retraction: Embelin Suppresses Osteoclastogenesis Induced by Receptor Activator of NF- κ B Ligand and Tumor Cells *In vitro* through Inhibition of the NF- κ B Cell Signaling Pathway

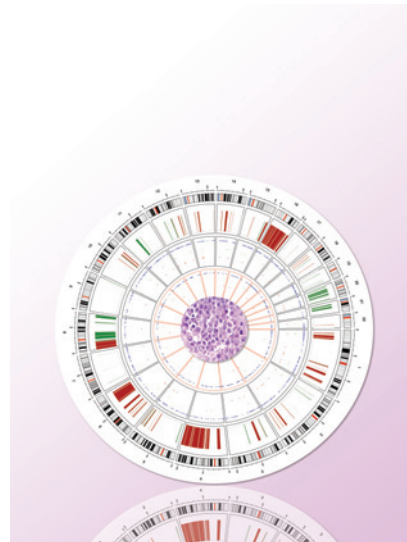
1444 Retraction: Boswellic Acid Blocks Signal Transducers and Activators of Transcription 3 Signaling, Proliferation, and Survival of Multiple Myeloma via the Protein Tyrosine Phosphatase SHP-1

 AC icon indicates AuthorChoice

For more information please visit www.aacrjournals.org

ABOUT THE COVER

Rhabdoid tumor arising in the colon (RC) is a rare and lethal pathologic variant, with recurrent mitotic anomalies of enigmatic origin. Patients with RC have a median survival of less than one year and no cure is available. The cover image shows a representative hematoxylin and eosin (H&E) stain of a rare BRAF^{V600E}-mutant and deficient in DNA mismatch repair RC used for whole exome sequencing. The graph indicates the total number of somatic mutations per each tumor, while the Circos plot shows the distribution of non-silent mutations and copy number variations (CNV) as indicated by the diverse colors; the outer ring indicates the chromosomes. The study describes a previously unknown link between centrosome cohesion defects and tetraploid segregation errors revealing an unexpected genetic vulnerability that can be exploited therapeutically. Please see the article by Remo and colleagues (beginning on page 1385) for more information.



Molecular Cancer Research

16 (9)

Mol Cancer Res 2018;16:1333-1444.

Updated version Access the most recent version of this article at:
<http://mcr.aacrjournals.org/content/16/9>

E-mail alerts [Sign up to receive free email-alerts](#) related to this article or journal.

Reprints and Subscriptions To order reprints of this article or to subscribe to the journal, contact the AACR Publications Department at pubs@aacr.org.

Permissions To request permission to re-use all or part of this article, use this link <http://mcr.aacrjournals.org/content/16/9>.
Click on "Request Permissions" which will take you to the Copyright Clearance Center's (CCC) Rightslink site.