

## Highlights of This Issue 185

## CELL CYCLE AND SENEESCENCE

- 187** ETV4 Facilitates Cell-Cycle Progression in Pancreatic Cells through Transcriptional Regulation of Cyclin D1  
Nikhil Tyagi, Sachin K. Deshmukh, Sanjeev K. Srivastava, Shafquat Azim, Aamir Ahmad, Ahmed AL-Ghadhban, Ajay P. Singh, James E. Carter, Bin Wang, and Seema Singh

## CELL DEATH AND SURVIVAL

- 197** Novel YAP1 Activator, Identified by Transcription-Based Functional Screen, Limits Multiple Myeloma Growth  
Junichi Maruyama, Kazutoshi Inami, Fumiyoshi Michishita, Xinliang Jiang, Hiroaki Iwasa, Kentaro Nakagawa, Mari Ishigami-Yuasa, Hiroyuki Kagechika, Norio Miyamura, Jun Hirayama, Hiroshi Nishina, Daichi Nogawa, Kouhei Yamamoto, and Yutaka Hata
- 212** Loss of Uracil DNA Glycosylase Selectively Resensitizes p53-Mutant and -Deficient Cells to 5-FdU  
Yan Yan, Yulan Qing, John J. Pink, and Stanton L. Gerson

## DNA DAMAGE AND REPAIR

- 222** PARP1 Trapping and DNA Replication Stress Enhance Radiosensitization with Combined WEE1 and PARP Inhibitors  
Leslie A. Parsels, David Karnak, Joshua D. Parsels, Qiang Zhang, Jonathan Vélez-Padilla, Zachery R. Reichert, Daniel R. Wahl, Jonathan Maybaum, Mark J. O'Connor, Theodore S. Lawrence, and Meredith A. Morgan
- 233** ER $\beta$  Sensitizes NSCLC to Chemotherapy by Regulating DNA Damage Response  
Fotis Nikolos, Christoforos Thomas, Igor Bado, and Jan-Åke Gustafsson

## METABOLISM

- 243** Small-Molecule Sigma1 Modulator Induces Autophagic Degradation of PD-L1  
Christina M. Maher, Jeffrey D. Thomas, Derick A. Haas, Charles G. Longen, Halley M. Oyer, Jane Y. Tong, and Felix J. Kim

- 256** Reprogramming of Glucose Metabolism by Zerumbone Suppresses Hepatocarcinogenesis  
Nissar Ahmad Wani, Bo Zhang, Kun-yu Teng, Juan M. Barajas, Tasneem Motiwala, Peng Hu, Lianbo Yu, Rafael Brüschweiler, Kalpana Ghoshal, and Samson T. Jacob

## GENOMICS

- 269** Precision Oncology beyond Targeted Therapy: Combining Omics Data with Machine Learning Matches the Majority of Cancer Cells to Effective Therapeutics  
Michael Q. Ding, Lujia Chen, Gregory F. Cooper, Jonathan D. Young, and Xinghua Lu
- 279** Targeted Next-Generation Sequencing for Detecting *MLL* Gene Fusions in Leukemia  
Sadia Afrin, Christine R.C. Zhang, Claus Meyer, Caedyn L. Stinson, Thy Pham, Timothy J.C. Bruxner, Nicola C. Venn, Toby N. Trahair, Rosemary Sutton, Rolf Marschalek, J. Lynn Fink, and Andrew S. Moore

## ONCOGENES AND TUMOR SUPPRESSORS

- 286** FBXO31 Suppresses Gastric Cancer EMT by Targeting Snail1 for Proteasomal Degradation  
Shuiyan Zou, Cunying Ma, Fenghua Yang, Xia Xu, Jihui Jia, and Zhifang Liu
- 296** Chemokine Signaling Facilitates Early-Stage Breast Cancer Survival and Invasion through Fibroblast-Dependent Mechanisms  
Gage Brummer, Diana S. Acevedo, Qingting Hu, Mike Portsche, Wei Bin Fang, Min Yao, Brandon Zinda, Megan Myers, Nehemiah Alvarez, Patrick Fields, Yan Hong, Fariba Behbod, and Nikki Cheng
- 309** Adipose-Derived VEGF-mTOR Signaling Promotes Endometrial Hyperplasia and Cancer: Implications for Obese Women  
Subhransu S. Sahoo, Janine M. Lombard, Yvette Ius, Rachel O'Sullivan, Lisa G. Wood, Pravin Nahar, Kenneth Jaaback, and Pradeep S. Tanwar

# Table of Contents

## SIGNAL TRANSDUCTION

**322** A Novel Signaling Complex between TROY and EGFR Mediates Glioblastoma Cell Invasion

Zonghui Ding, Alison Roos, Jean Kloss, Harshil Dhruv, Sen Peng, Patrick Pirrotte, Jennifer M. Eschbacher, Nhan L. Tran, and Joseph C. Loftus

**333** Competitive Kinase Enrichment Proteomics Reveals that Abemaciclib Inhibits GSK3 $\beta$  and Activates WNT Signaling

Emily M. Cousins, Dennis Goldfarb, Feng Yan, Jose Roques, David Darr, Gary L. Johnson, and Michael B. Major

**345** Genotoxic Damage Activates the AMPK- $\alpha$ 1 Isoform in the Nucleus via Ca<sup>2+</sup>/CaMKK2 Signaling to Enhance Tumor Cell Survival



Diana Vara-Ciruelos, Madhumita Dandapani, Alexander Gray, Ejaife O. Egbani, A. Mark Evans, and D. Grahame Hardie

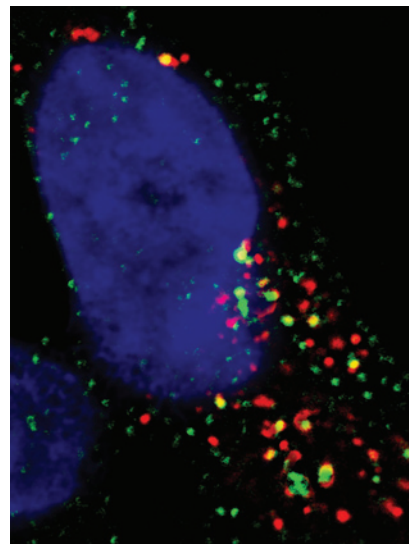


AC icon indicates AuthorChoice

For more information please visit [www.aacrjournals.org](http://www.aacrjournals.org)

## ABOUT THE COVER

Confocal image of PD-L1 (green) in autophagosomes (red) in MDA-MB-231 triple-negative breast cancer cells treated with a Sigma1 modulator (IPAG). Nuclei are labeled in blue. Beginning on page 243, Maher and colleagues demonstrate that small-molecule Sigma1 modulators can be used to regulate PD-L1 in cancer cells and trigger its degradation by selective autophagy.



# Molecular Cancer Research

16 (2)

*Mol Cancer Res* 2018;16:185-357.

**Updated version** Access the most recent version of this article at:  
<http://mcr.aacrjournals.org/content/16/2>

**E-mail alerts** [Sign up to receive free email-alerts](#) related to this article or journal.

**Reprints and Subscriptions** To order reprints of this article or to subscribe to the journal, contact the AACR Publications Department at [pubs@aacr.org](mailto:pubs@aacr.org).

**Permissions** To request permission to re-use all or part of this article, use this link <http://mcr.aacrjournals.org/content/16/2>. Click on "Request Permissions" which will take you to the Copyright Clearance Center's (CCC) Rightslink site.