

Highlights of This Issue 1171

PERSPECTIVE

- 1173** A New Chromatin–Cytoskeleton Link in Cancer
Amato J. Giaccia

MCR RapidIMPACT

- 1176** Synthetic Lethality in PTEN-Mutant Prostate Cancer Is Induced by Combinatorial PI3K/Akt and BCL-X_L Inhibition
Wenyang Ren, Raghav Joshi, and Paul Mathew

CELL CYCLE AND SENESCENCE

- 1182** AMPK α 2 Regulates Bladder Cancer Growth through SKP2-Mediated Degradation of p27
Stavros Kopsiaftis, Katie L. Sullivan, Isha Garg, John A. Taylor III, and Kevin P. Claffey

DNA DAMAGE AND REPAIR

- 1195** Olaparib, Monotherapy or with Ionizing Radiation, Exacerbates DNA Damage in Normal Tissues: Insights from a New p21 Reporter Mouse
Michael McMahon, Tania G. Frangova, Colin J. Henderson, and C. Roland Wolf

CELL DEATH AND SURVIVAL

- 1204** MEK and TAK1 Regulate Apoptosis in Colon Cancer Cells with KRAS-Dependent Activation of Proinflammatory Signaling
Kelsey L. McNew, William J. Whipple, Anita K. Mehta, Trevor J. Grant, Leah Ray, Connor Kenny, and Anurag Singh

GENOMICS

- 1217** Integrated Genetic, Epigenetic, and Transcriptional Profiling Identifies Molecular Pathways in the Development of Laterally Spreading Tumors
Luke B. Hesson, Benedict Ng, Peter Zarzour, Sameer Srivastava, Chau-To Kwok, Deborah Packham, Andrea C. Nunez, Dominik Beck, Regina Ryan, Ashraf Dower, Caroline E. Ford, John E. Pimanda, Mathew A. Sloane, Nicholas J. Hawkins, Michael J. Bourke, Jason W.H. Wong, and Robyn L. Ward

METABOLISM


- 1229** Increased Expression of System x_c⁻ in Glioblastoma Confers an Altered Metabolic State and Temozolomide Resistance
Monika D. Polewski, Rosyli F. Reveron-Thornton, Gregory A. Cherryholmes, Georgi K. Marinov, Kaniel Cassidy, and Karen S. Aboody

ONCOGENES AND TUMOR SUPPRESSORS

- 1243** Heparanase Promotes Glioma Progression and Is Inversely Correlated with Patient Survival
Soumi Kundu, Anqi Xiong, Argyris Spyrou, Grzegorz Wicher, Voichita D. Marinescu, Per-Henrik D. Edqvist, Lei Zhang, Magnus Essand, Anna Dimberg, Anja Smits, Neta Ilan, Israel Vlodavsky, Jin-Ping Li, and Karin Forsberg-Nilsson
- 1254** Adipose-Induced Retroperitoneal Soft Tissue Sarcoma Tumorigenesis: A Potential Crosstalk between Sarcoma and Fat Cells
Shelly Loewenstein, Nir Lubezky, Eran Nizri, Meir Zemel, Yishai Levin, Alon Savidor, Osnat Sher, Joseph M. Klausner, and Guy Lahat
- 1266** MUC1-C Represses the Crumbs Complex Polarity Factor CRB3 and Downregulates the Hippo Pathway
Maroof Alam, Audrey Bouillez, Ashujit Tagde, Rehan Ahmad, Hasan Rajabi, Takahiro Maeda, Masayuki Hiraki, Yoza Suzuki, and Donald Kufe

Table of Contents

SIGNAL TRANSDUCTION

- 1277** **The Cytoskeletal Adapter Protein Spinophilin Regulates Invadopodia Dynamics and Tumor Cell Invasion in Glioblastoma**
 Mujeeburahiman Cheerathodi, Naze G. Avci, Paola A. Guerrero, Leung K. Tang, Julia Popp, John E. Morales, Zhihua Chen, Amancio Carnero, Frederick F. Lang, Bryan A. Ballif, Gonzalo M. Rivera, and Joseph H. McCarty

- 1288** **Oncofetal Chondroitin Sulfate Glycosaminoglycans Are Key Players in Integrin Signaling and Tumor Cell Motility**
Thomas Mandel Clausen, Marina Ayres Pereira, Nader Al Nakouzi, Htoo Zarni Oo, Mette Ø Agerbæk, Sherry Lee, Maj Sofie Ørum-Madsen, Anders Riis Kristensen, Amal El-Naggar, Paul M. Grandgenett, Jean L. Grem, Michael A. Hollingsworth, Peter J. Holst, Thor Theander, Poul H. Sorensen, Mads Daugaard, and Ali Salanti

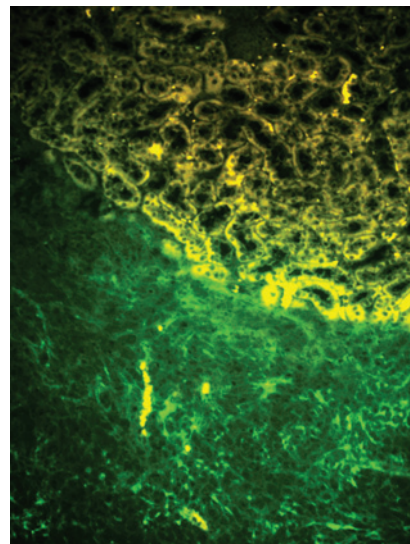
- 1300** **Acknowledgment to Reviewers**

 **AC icon indicates Author Choice**

For more information please visit www.aacrjournals.org

ABOUT THE COVER

The placenta and most cancers share the expression of a unique type of chondroitin sulfate, targetable by the malarial VAR2CSA protein. The function of this oncofetal chondroitin sulfate (ofcs) is partly to aid in cancer cell motility and metastasis. The cover image shows binding of recombinant VAR2CSA (rVAR2) to a kidney metastasis site, created by injecting luciferase positive Lewis Lung Carcinoma cells into the left ventricle of the heart in mice. The green color shows binding of Alexa 488 labeled rVAR2 to the metastatic lesion with no binding seen to the adjacent normal kidney tissue (seen as yellow due to autofluorescence). For more information, see the article by Clausen and colleagues beginning on page 1288.



Molecular Cancer Research

14 (12)

Mol Cancer Res 2016;14:1171-1301.

Updated version Access the most recent version of this article at:
<http://mcr.aacrjournals.org/content/14/12>

E-mail alerts [Sign up to receive free email-alerts](#) related to this article or journal.

Reprints and Subscriptions To order reprints of this article or to subscribe to the journal, contact the AACR Publications Department at pubs@aacr.org.

Permissions To request permission to re-use all or part of this article, use this link <http://mcr.aacrjournals.org/content/14/12>. Click on "Request Permissions" which will take you to the Copyright Clearance Center's (CCC) Rightslink site.