

**Highlights of This Issue 593**
**REVIEWS**

- 595** The Ras–Membrane Interface: Isoform-Specific Differences in the Catalytic Domain  
Jillian A. Parker and Carla Mattos

- 604** Membrane-to-Nucleus Signals and Epigenetic Mechanisms for Myofibroblastic Activation and Desmoplastic Stroma: Potential Therapeutic Targets for Liver Metastasis?  
Ningling Kang, Vijay H. Shah, and Raul Urrutia

*MCR* **RapidIMPACT**

- 613** Next-Gen Sequencing Exposes Frequent *MED12* Mutations and Actionable Therapeutic Targets in Phyllodes Tumors  
Andi K. Cani, Daniel H. Hovelson, Andrew S. McDaniel, Seth Sadis, Michaela J. Haller, Venkata Yadati, Anmol M. Amin, Jarred Bratley, Santhoshi Bandla, Paul D. Williams, Kate Rhodes, Chia-Jen Liu, Michael J. Quist, Daniel R. Rhodes, Catherine S. Grasso, Celina G. Kleer, and Scott A. Tomlins

**CELL CYCLE AND SENESCENCE**

- 620** Salt-Inducible Kinase 2 Regulates Mitotic Progression and Transcription in Prostate Cancer  
Hélène Bon, Karan Wadhwa, Alexander Schreiner, Michelle Osborne, Thomas Carroll, Antonio Ramos-Montoya, Helen Ross-Adams, Matthieu Visser, Ralf Hoffmann, Ahmed Ashour Ahmed, David E. Neal, and Ian G. Mills
- 636** The Histone Demethylase Jumonji Coordinates Cellular Senescence Including Secretion of Neural Stem Cell–Attracting Cytokines  
Patrick M. Perriguet, Michael E. Silva, Charles D. Warden, Nathan L. Feng, Michael A. Reid, Daniel J. Mota, Lauren P. Joseph, Yangzi Isabel Tian, Carlotta A. Glackin, Margarita Gutova, Joseph Najbauer, Karen S. Aboody, and Michael E. Barish

**CELL DEATH AND SURVIVAL**

- 651** Autophagy Supports Breast Cancer Stem Cell Maintenance by Regulating IL6 Secretion  
Paola Maycotte, Kenneth L. Jones, Megan L. Goodall, Jacqueline Thorburn, and Andrew Thorburn

- 659** Reversal of Mutant *KRAS*-Mediated Apoptosis Resistance by Concurrent Noxa/Bik Induction and Bcl-2/Bcl-xL Antagonism in Colon Cancer Cells  
Koichi Okamoto, Aziz Zaanani, Hisato Kawakami, Shengbing Huang, and Frank A. Sinicrope

- 670** Targeting Nodal in Conjunction with Dacarbazine Induces Synergistic Anticancer Effects in Metastatic Melanoma  
Katharine M. Hardy, Luigi Strizzi, Naira V. Margaryan, Kanika Gupta, George F. Murphy, Richard A. Scolyer, and Mary J.C. Hendrix

**CHROMATIN, GENE, AND RNA REGULATION**

- 681** LEF1 Targeting EMT in Prostate Cancer Invasion Is Regulated by miR-34a  
Jiaqian Liang, Yirong Li, Garrett Daniels, Karen Sfanos, Angelo De Marzo, Jianjun Wei, Xin Li, Wenqiang Chen, Jinhua Wang, Xuelin Zhong, Jonathan Melamed, Jun Zhao, and Peng Lee
- 689** Dynamic Epigenetic Regulation by Menin During Pancreatic Islet Tumor Formation  
Wenchu Lin, Hideo Watanabe, Shouyong Peng, Joshua M. Francis, Nathan Kaplan, Chandra Sekhar Pedomallu, Aruna Ramachandran, Agoston Agoston, Adam J. Bass, and Matthew Meyerson

**DNA DAMAGE AND REPAIR**

- 699** c-MYC Generates Repair Errors via Increased Transcription of Alternative-NHEJ Factors, LIG3 and PARP1, in Tyrosine Kinase–Activated Leukemias  
Nidal Muvarak, Shannon Kelley, Carine Robert, Maria R. Baer, Danilo Perrotti, Carlo Gambacorti-Passerini, Curt Civin, Kara Scheibner, and Feyruz V. Rassool
- 713** Adapting a Drug Screening Platform to Discover Associations of Molecular Targeted Radiosensitizers with Genomic Biomarkers  
Qi Liu, Meng Wang, Ashley M. Kern, Saman Khaled, Jing Han, Beow Y. Yeap, Theodore S. Hong, Jeff Settleman, Cyril H. Benes, Kathryn D. Held, Jason A. Efstathiou, and Henning Willers

# Table of Contents

## GENOMICS

- 721** Aberrant Myosin 1b Expression Promotes Cell Migration and Lymph Node Metastasis of HNSCC  
Gaku Ohmura, Takahiro Tsujikawa, Tomonori Yaguchi, Naoshi Kawamura, Shuji Mikami, Juri Sugiyama, Kenta Nakamura, Asuka Kobayashi, Takashi Iwata, Hiroshi Nakano, Taketoshi Shimada, Yasuo Hisa, and Yutaka Kawakami
- 732** p53 and  $\Delta$ Np63 $\alpha$  Coregulate the Transcriptional and Cellular Response to TGF $\beta$  and BMP Signals  
Amanda L. Balboni, Pratima Cherukuri, Matthew Ung, Andrew J. DeCastro, Chao Cheng, and James DiRenzo

## ONCOGENES AND TUMOR SUPPRESSORS

- 743** Mutant p53 Amplifies Epidermal Growth Factor Receptor Family Signaling to Promote Mammary Tumorigenesis  
Alisha R. Yallowitz, Dun Li, Anthony Lobko, Daniel Mott, Alice Nemaierova, and Natalia Marchenko
- 755** EMT Transition Alters Interstitial Fluid Flow–Induced Signaling in *ERBB2*-Positive Breast Cancer Cells  
Alimatou M. Tchafa, Mi Ta, Mauricio J. Reginato, and Adrian C. Shieh

## SIGNAL TRANSDUCTION

- 765** Differential Effects of Tyrosine Kinase Inhibitors on Normal and Oncogenic EGFR Signaling and Downstream Effectors  
Youngjoo Kim, Mihaela Apetri, BeiBei Luo, Jeffrey E. Settleman, and Karen S. Anderson
- 775** Treatment Efficacy and Resistance Mechanisms Using the Second-Generation ALK Inhibitor AP26113 in Human NPM-ALK-Positive Anaplastic Large Cell Lymphoma  
M. Ceccon, L. Mologni, G. Giudici, R. Piazza, A. Pirola, D. Fontana, and C. Gambacorti-Passerini
- 784** Systematic siRNA Screen Unmasks NSCLC Growth Dependence by Palmitoyltransferase DHHC5  
Hui Tian, Jui-Yun Lu, Chunli Shao, Kenneth E. Huffman, Ryan M. Carstens, Jill E. Larsen, Luc Girard, Hui Liu, Jaime Rodriguez-Canales, Eugene P. Frenkel, Ignacio I. Wistuba, John D. Minna, and Sandra L. Hofmann
- 795** Preclinical Efficacy for AKT Targeting in Clear Cell Carcinoma of the Ovary  
Tomoyuki Sasano, Seiji Mabuchi, Hiromasa Kuroda, Mahiru Kawano, Yuri Matsumoto, Ryoko Takahashi, Takeshi Hisamatsu, Kenjiro Sawada, Kae Hashimoto, Aki Isobe, Joseph R. Testa, and Tadashi Kimura

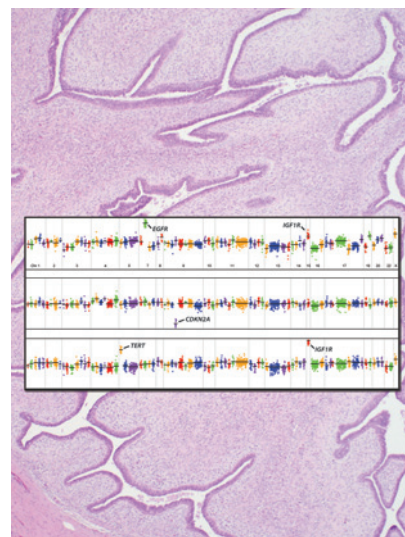


AC icon indicates Author Choice

For more information please visit [www.aacrjournals.org](http://www.aacrjournals.org)

## ABOUT THE COVER

Phyllodes tumors are fibroepithelial breast cancers often found in adult women and can be very fast-growing and malignant. The cover shows a representative hematoxylin and eosin (H&E) stained section from a borderline phyllodes tumor used for targeted next-gen sequencing (NGS). The H&E is overlaid with copy number profiles from three malignant phyllodes tumors demonstrating high level copy number alterations (CNAs). Please see the article by Cani and colleagues (beginning on page 613) for more information.



# Molecular Cancer Research

13 (4)

*Mol Cancer Res* 2015;13:593-806.

**Updated version** Access the most recent version of this article at:  
<http://mcr.aacrjournals.org/content/13/4>

**E-mail alerts** [Sign up to receive free email-alerts](#) related to this article or journal.

**Reprints and Subscriptions** To order reprints of this article or to subscribe to the journal, contact the AACR Publications Department at [pubs@aacr.org](mailto:pubs@aacr.org).

**Permissions** To request permission to re-use all or part of this article, use this link <http://mcr.aacrjournals.org/content/13/4>. Click on "Request Permissions" which will take you to the Copyright Clearance Center's (CCC) Rightslink site.