

Highlights of This Issue 1

REVIEW

- 3** Therapeutic Targeting of Cellular Metabolism in Cells with Hyperactive mTORC1: A Paradigm Shift
Doug Medvetz, Carmen Priolo, and Elizabeth P. Henske

MCR RapidIMPACT

- 9** CD44 Regulates Pancreatic Cancer Invasion through MT1-MMP
Wei Jiang, Yaqing Zhang, Kevin T. Kane, Meredith A. Collins, Diane M. Simeone, Marina Pasca di Magliano, and Kevin Tri Nguyen

CELL CYCLE AND SENESCENCE

- 16** p53 Promotes Cell Survival due to the Reversibility of Its Cell-Cycle Checkpoints
Dana J. Lukin, Luis A. Carvajal, Wen-jun Liu, Lois Resnick-Silverman, and James J. Manfredi
- 29** CDK2 Transcriptional Repression Is an Essential Effector in p53-Dependent Cellular Senescence—Implications for Therapeutic Intervention
Hasan Zalzali, Bilal Nasr, Mohamad Harajly, Hussein Basma, Farah Ghamloush, Sandra Ghayad, Noël Ghanem, Gerard I Evan, and Raya Saab
- 41** SIRT1 Inactivation Evokes Antitumor Activities in NSCLC through the Tumor Suppressor p27
Lijia Zhu, Christine Y. Chiao, Katelyn G. Enzer, Alexander J. Stankiewicz, Douglas V. Faller, and Yan Dai

CELL DEATH AND SURVIVAL

- 50** High-Throughput Drug Screen Identifies Chelerythrine as a Selective Inducer of Death in a TSC2-null Setting
Doug Medvetz, Yang Sun, Chenggang Li, Damir Khabibullin, Murugabaskar Balan, Andrey Parkhitko, Carmen Priolo, John M. Asara, Soumitro Pal, Jane Yu, and Elizabeth P. Henske
- 63** Constitutively Active ErbB2 Regulates Cisplatin-Induced Cell Death in Breast Cancer Cells via Pro- and Antiapoptotic Mechanisms
Haraldur H. Sigurðsson, Christina W. Olesen, Rie Dybboe, Gitte Lauritzen, and Stine F. Pedersen

- 78** Notch3 Overexpression Promotes Anoikis Resistance in Epithelial Ovarian Cancer via Upregulation of COL4A2
Caitlin W. Brown, Alexander S. Brodsky, and Richard N. Freiman

- 86** BIRO1, a Cell-Permeable BH3 Peptide, Promotes Mitochondrial Fragmentation and Death of Retinoblastoma Cells

Nathalie Allaman-Pillet, Anne Oberson, and Daniel F. Schorderet

CHROMATIN, GENE, AND RNA REGULATION

- 98** Whole Transcriptome Sequencing Reveals Extensive Unspliced mRNA in Metastatic Castration-Resistant Prostate Cancer
Adam G. Sowalsky, Zheng Xia, Ligu Wang, Hao Zhao, Shaoyong Chen, Glenn J. Bublely, Steven P. Balk, and Wei Li
- 107** Epigenetic Inactivation and Tumor-Suppressor Behavior of NGFR in Human Colorectal Cancer
Zuli Yang, Hao Chen, Lijun Huo, Zihuan Yang, Yang Bai, Xinjuan Fan, Beibei Ni, Lekun Fang, Jun Hu, Junsheng Peng, Lei Wang, and Jianping Wang

DNA DAMAGE AND REPAIR

- 120** A Synthetic Lethal Screen Reveals Enhanced Sensitivity to ATR Inhibitor Treatment in Mantle Cell Lymphoma with ATM Loss-of-Function
Daniel L. Menezes, Jenny Holt, Yan Tang, Jiajia Feng, Paul Barsanti, Yue Pan, Majid Ghodduzi, Wei Zhang, George Thomas, Jocelyn Holash, Emma Lees, and Lorena Taricani

GENOMICS

- 130** RNA-seq Reveals Aurora Kinase-Driven mTOR Pathway Activation in Patients with Sarcomatoid Metastatic Renal Cell Carcinoma
Sumanta K. Pal, Miaoling He, Tommy Tong, Huiqing Wu, Xueli Liu, Clayton Lau, Jin-Hui Wang, Charles Warden, Xiwei Wu, Sabina Signoretto, Toni K. Choueiri, Jose A. Karam, and Jeremy O. Jones
- 138** Alteration of Cell-Cell and Cell-Matrix Adhesion in Urothelial Cells: An Oncogenic Mechanism for Mutant FGFR3
Erica di Martino, Gavin Kelly, Jo-An Roulson, and Margaret A. Knowles

Table of Contents

ONCOGENES AND TUMOR SUPPRESSORS

- 149** **Phosphodiesterase 4D Inhibitors Limit Prostate Cancer Growth Potential**
Ginny L. Powers, Kimberly D.P. Hammer, Maribella Domenech, Katsiaryna Frantskevich, Rita L. Malinowski, Wade Bushman, David J. Beebe, and Paul C. Marker
- 161** **Matrix Stiffening and β_1 Integrin Drive Subtype-Specific Fibroblast Accumulation in Lung Cancer**
Marta Puig, Roberto Lugo, Marta Gabasa, Alícia Giménez, Adriana Velásquez, Roland Galgoczy, Josep Ramírez, Abel Gómez-Caro, Óscar Busnadiego, Fernando Rodríguez-Pascual, Pere Gascón, Noemí Reguart, and Jordi Alcaraz

SIGNAL TRANSDUCTION

- 174** **Autotaxin and LPA₁ and LPA₅ Receptors Exert Disparate Functions in Tumor Cells versus the Host Tissue Microenvironment in Melanoma Invasion and Metastasis**
Sue-Chin Lee, Yuko Fujiwara, Jianxiong Liu, Junming Yue, Yoshibumi Shimizu, Derek D. Norman, Yaohong Wang, Ryoko Tsukahara, Erzsebet Szabo, Renukadevi Patil, Souvik Banerjee, Duane D. Miller, Louisa Balazs, Manik C. Ghosh, Christopher M. Waters, Tamas Oravecz, and Gabor J. Tigyi

- 186** **Loss of Keratinocytic RXR α Combined with Activated CDK4 or Oncogenic NRAS Generates UVB-Induced Melanomas via Loss of p53 and PTEN in the Tumor Microenvironment**
Daniel J. Coleman, Sharmeen Chagani, Stephen Hyter, Anna M. Sherman, Christiane V. Löhr, Xiaobo Liang, Gitali Ganguli-Indra, and Arup K. Indra
- 197** **Annexin 2–CXCL12 Interactions Regulate Metastatic Cell Targeting and Growth in the Bone Marrow**
Younghun Jung, Jingcheng Wang, Eunsohl Lee, Samantha McGee, Janice E. Berry, Kenji Yumoto, Jinlu Dai, Evan T. Keller, Yusuke Shiozawa, and Russell S. Taichman



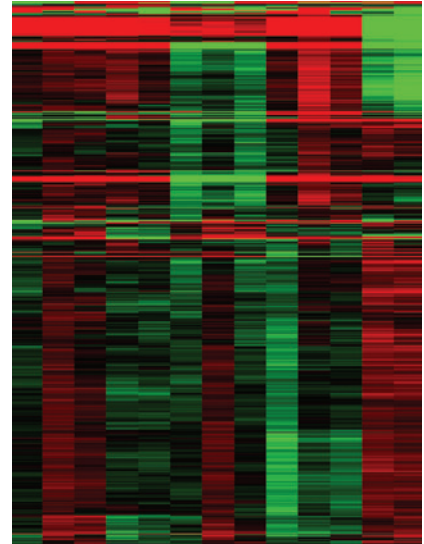
AC icon indicates Author Choice

For more information please visit www.aacrjournals.org

Table of Contents

ABOUT THE COVER

Sarcomatoid is a rare and aggressive histologic subset of renal cell carcinoma, and one which is refractory to current treatments. RNA-sequencing was performed on benign, clear cell, and sarcomatoid tissue specimens derived from five patient samples. Hierarchical clustering demonstrated a strong dependence on the patient from which the sample was obtained, not on histological disease designation. Each column represents one sample, and each row represents one gene. Analysis revealed increased expression of Aurora kinases and cell proliferation pathways in the sarcomatoid components of the cancers. See the article by Pal and colleagues (beginning on page 130) for more information.



Molecular Cancer Research

13 (1)

Mol Cancer Res 2015;13:1-207.

Updated version Access the most recent version of this article at:
<http://mcr.aacrjournals.org/content/13/1>

E-mail alerts [Sign up to receive free email-alerts](#) related to this article or journal.

Reprints and Subscriptions To order reprints of this article or to subscribe to the journal, contact the AACR Publications Department at pubs@aacr.org.

Permissions To request permission to re-use all or part of this article, use this link <http://mcr.aacrjournals.org/content/13/1>. Click on "Request Permissions" which will take you to the Copyright Clearance Center's (CCC) Rightslink site.