

## Highlights of This Issue 965

### REVIEW

- 967 | **The Role of Inflammatory Pathways in Cancer-Associated Cachexia and Radiation Resistance**  
Aaron Laine, Puneeth Iyengar, and Tej K. Pandita

### CELL CYCLE AND SENESCENCE

- 973 | **Energy Management by Enhanced Glycolysis in G<sub>1</sub>-phase in Human Colon Cancer Cells *In Vitro* and *In Vivo***  
Yan Bao, Kuniaki Mukai, Takako Hishiki, Akiko Kubo, Mitsuyo Ohmura, Yuki Sugjura, Tomomi Matsuura, Yoshiko Nagahata, Noriyo Hayakawa, Takehiro Yamamoto, Ryo Fukuda, Hideyuki Saya, Makoto Suematsu, and Yoji Andrew Minamishima

- 986 | **PTPIB Contributes to Calreticulin-Induced Metastatic Phenotypes in Esophageal Squamous Cell Carcinoma**  
Xiao-Min Wang, Li Shang, Yu Zhang, Jia-Jie Hao, Feng Shi, Wei Luo, Tong-Tong Zhang, Bo-Shi Wang, Yang Yang, Zhi-Hua Liu, Qi-Min Zhan, and Ming-Rong Wang

### CELL DEATH AND SURVIVAL

- 995 | **B56 $\gamma$  Tumor-Associated Mutations Provide New Mechanisms for B56 $\gamma$ -PP2A Tumor Suppressor Activity**  
Yumiko Nobumori, Geoffrey P. Shouse, Yong Wu, Kyu Joon Lee, Binghui Shen, and Xuan Liu

- 1004 | **Dynamic Chemotherapy-Induced Upregulation of CXCR4 Expression: A Mechanism of Therapeutic Resistance in Pediatric AML**  
Edward Allan R. Sison, Emily McIntyre, Daniel Magoon, and Patrick Brown

### CHROMATIN, GENE, AND RNA REGULATION

- 1017 | **Unraveling the Role of FOXQ1 in Colorectal Cancer Metastasis**  
Mohammed Abba, Nitin Patil, Kabeer Rasheed, Laura D. Nelson, Giridhar Mudduluru, Jörg Hendrik Leupold, and Heike Allgayer

- 1029 | **Towards Sustained Silencing of HER2/neu in Cancer By Epigenetic Editing**  
Fahimeh Falahi, Christian Huisman, Hinke G. Kazemier, Pieter van der Vlies, Klaas Kok, Geke A.P. Hospers, and Marianne G. Rots

### DNA DAMAGE AND REPAIR

- 1040 | **Epithelial-Specific Deletion of 11 $\beta$ -HSD2 Hinders Apc<sup>min/+</sup> Mouse Tumorigenesis**  
Li Jiang, Shilin Yang, Huiyong Yin, Xiaofeng Fan, Suwan Wang, Bing Yao, Ambra Pozzi, Xiaoping Chen, Raymond C. Harris, and Ming-Zhi Zhang

### GENOMICS

- 1051 | **Tumor Suppressor Functions of miR-133a in Colorectal Cancer**  
Yujuan Dong, Junhong Zhao, Chung-Wah Wu, Lijing Zhang, Xiaodong Liu, Wei Kang, Wing-Wah Leung, Ning Zhang, Francis K.L. Chan, Joseph J.Y. Sung, Simon S.M. Ng, and Jun Yu

- 1061 | **A Novel Germline Mutation in BAP1 Predisposes to Familial Clear-Cell Renal Cell Carcinoma**  
Megan N. Farley, Laura S. Schmidt, Jessica L. Mester, Samuel Peña-Llopis, Andrea Pavia-Jimenez, Alana Christie, Cathy D. Vocke, Christopher J. Ricketts, James Peterson, Lindsay Middleton, Lisa Kinch, Nick Grishin, Maria J. Merino, Adam R. Metwalli, Chao Xing, Xian-Jin Xie, Patricia L.M. Dahia, Charis Eng, W. Marston Linehan, and James Brugarolas

### ONCOGENES AND TUMOR SUPPRESSORS

- 1072 | **HDAC6 and SIRT2 Regulate the Acetylation State and Oncogenic Activity of Mutant K-RAS**  
Moon Hee Yang, Gaele Laurent, Alexandra S. Bause, Robert Spang, Natalie German, Marcia C. Haigis, and Kevin M. Haigis

- 1078 | **Snail Cooperates with Kras<sup>G12D</sup> to Promote Pancreatic Fibrosis**  
Mario A. Shields, Kazumi Ebine, Vaibhav Sahai, Krishan Kumar, Kulsumjehan Siddiqui, Rosa F. Hwang, Paul J. Grippo, and Hidayatullah G. Munshi

---

## SIGNAL TRANSDUCTION

1088 | **Residual Prostate Cancer Cells after Docetaxel Therapy Increase the Tumorigenic Potential via Constitutive Signaling of CXCR4, ERK1/2 and c-Myc**

Koji Hatano, Souhei Yamaguchi, Keisuke Nimura, Kouki Murakami, Akira Nagahara, Kazutoshi Fujita, Motohide Uemura, Yasutomo Nakai, Mutsumi Tsuchiya, Masashi Nakayama, Norio Nonomura, and Yasufumi Kaneda

1101 | **AURKA Governs Self-Renewal Capacity in Glioma-Initiating Cells via Stabilization/Activation of  $\beta$ -catenin/Wnt Signaling**

Zhibo Xia, Ping Wei, Heng Zhang, Zhiming Ding, Lixuan Yang, Zhengsong Huang, and Nu Zhang

1112



**MET and ERBB2 Are Coexpressed in ERBB2<sup>+</sup> Breast Cancer and Contribute to Innate Resistance**

Amanda K. Paulson, Erik S. Linklater, Bree D. Berghuis, Colleen A. App, Leon D. Oostendorp, Jayne E. Paulson, Jane E. Pettinga, Marianne K. Melnik, George F. Vande Woude, and Carrie R. Graveel

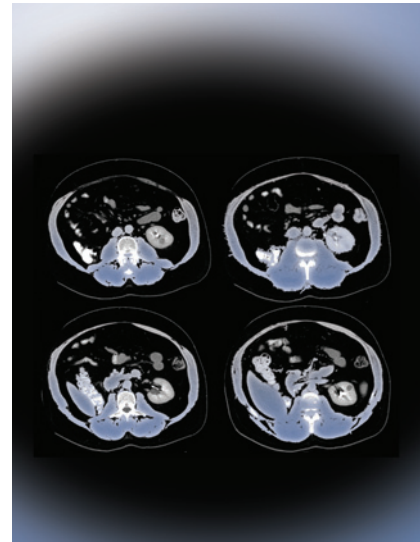
AC icon indicates Author Choice

For more information please visit [www.aacrjournals.org](http://www.aacrjournals.org)

---

## ABOUT THE COVER

The image shows axial abdominal computed tomography (CT) scans from the proband of a family in which multiple individuals were affected by kidney cancer. This family was found to have a germline mutation in the gene encoding the nuclear deubiquitinase BAP1 (BRCA1-associated protein-1). Following resection of the right kidney for cancer, the patient developed multifocal tumors in the left kidney, as shown in the four panels. At the age of 46, he underwent the first of three left partial nephrectomies for the surgical removal of two high-grade clear cell renal carcinomas measuring 3 cm and 1.5 cm, respectively, and a 2-cm atypical cyst with clear cell lining. For details, see the article by Farley and colleagues on page 1061.



# Molecular Cancer Research

11 (9)

*Mol Cancer Res* 2013;11:965-1121.

**Updated version** Access the most recent version of this article at:  
<http://mcr.aacrjournals.org/content/11/9>

**E-mail alerts** [Sign up to receive free email-alerts](#) related to this article or journal.

**Reprints and Subscriptions** To order reprints of this article or to subscribe to the journal, contact the AACR Publications Department at [pubs@aacr.org](mailto:pubs@aacr.org).

**Permissions** To request permission to re-use all or part of this article, use this link <http://mcr.aacrjournals.org/content/11/9>. Click on "Request Permissions" which will take you to the Copyright Clearance Center's (CCC) Rightslink site.