

### Highlights of This Issue 1293

#### REVIEW

- 1295 | **Approaches for Assessing and Discovering Protein Interactions in Cancer**  
Hisham Mohammed and Jason S. Carroll

#### CELL CYCLE AND SENEESCENCE

- 1303 | **Dynamic and Nuclear Expression of PDGFR $\alpha$  and IGF-1R in Alveolar Rhabdomyosarcoma**  
M. Imran Aslam, Simone Hettmer, Jinu Abraham, Dorian LaTocha, Anuradha Soundararajan, Elaine T. Huang, Martin W. Goros, Joel E. Michalek, Shuyu Wang, Atiya Mansoor, Brian J. Druker, Amy J. Wagers, Jeffrey W. Tyner, and Charles Keller
- 1314 | **miR-106a Represses the Rb Tumor Suppressor p130 to Regulate Cellular Proliferation and Differentiation in High-Grade Serous Ovarian Carcinoma**  
Zhaojian Liu, Elizabeth Gersbach, Xiyu Zhang, Xiaofei Xu, Ruifen Dong, Peng Lee, Jinsong Liu, Beihua Kong, Changshun Shao, and Jian-Jun Wei

#### CELL DEATH AND SURVIVAL

- 1326 | **Inhibition of mTOR Pathway Sensitizes Acute Myeloid Leukemia Cells to Aurora Inhibitors by Suppression of Glycolytic Metabolism**  
Ling-Ling Liu, Zi-Jie Long, Le-Xun Wang, Fei-Meng Zheng, Zhi-Gang Fang, Min Yan, Dong-Fan Xu, Jia-Jie Chen, Shao-Wu Wang, Dong-Jun Lin, and Quentin Liu
- 1337 | **PHD4 Stimulates Tumor Angiogenesis in Osteosarcoma Cells via TGF- $\alpha$**   
Anne Klotzsche-von Ameln, Ina Prade, Marianne Grosser, Antje Kettelhake, Maryam Rezaei, Triantafyllos Chavakis, Ingo Flamme, Ben Wielockx, and Georg Breier

#### CHROMATIN, GENE, AND RNA REGULATION

- 1349 | **Transcriptional Regulation of CXCR4 in Prostate Cancer: Significance of TMPRSS2-ERG Fusions**  
Rajareddy Singareddy, Louie Semaan, M. Katie Conley-LaComb, Jason St. John, Katelyn Powell, Matthew Iyer, Daryn Smith, Lance K. Heilbrun, Dongping Shi, Wael Sakr, Michael L. Cher, and Sreenivasa R. Chinni

#### DNA DAMAGE AND REPAIR

- 1362 | **DNA Damage-Inducible Gene, Reprimo Functions as a Tumor Suppressor and Is Suppressed by Promoter Methylation in Gastric Cancer**  
Akira Ooki, Keishi Yamashita, Kensei Yamaguchi, Anupom Mondal, Hiroshi Nishimiya, and Masahiko Watanabe

#### GENOMICS

- 1375 | **Tpl2 Kinase Impacts Tumor Growth and Metastasis of Clear Cell Renal Cell Carcinoma**  
Hye Won Lee, Kyeung Min Joo, Joung Eun Lim, Hyun Jung Cho, Hee Jin Cho, Min Chul Park, Ho Jun Seol, Seong Il Seo, Jung-Il Lee, Sunghoon Kim, Byong Chang Jeong, and Do-Hyun Nam
- 1387 | **The Twist Box Domain Is Required for Twist1-induced Prostate Cancer Metastasis**  
Rajendra P. Gajula, Sivarajan T. Chettiar, Russell D. Williams, Saravanan Thiagarajan, Yoshinori Kato, Khaled Aziz, Ruoqi Wang, Nishant Gandhi, Aaron T. Wild, Farhad Vesuna, Jinfang Ma, Tarek Salih, Jessica Cades, Elana Fertig, Shyam Biswal, Timothy F. Burns, Christine H. Chung, Charles M. Rudin, Joseph M. Herman, Russell K. Hales, Venu Raman, Steven S. An, and Phuoc T. Tran

#### ONCOGENES AND TUMOR SUPPRESSORS

- 1401 | **Inhibition of Cell Adhesion by a Cadherin-11 Antibody Thwarts Bone Metastasis**  
Yu-Chen Lee, Mehmet Asim Bilen, Guoyu Yu, Song-Chang Lin, Chih-Fen Huang, Angelica Ortiz, Hyojin Cho, Jian H. Song, Robert L. Satcher, Jian Kuang, Gary E. Gallick, Li-Yuan Yu-Lee, Wilber Huang, and Sue-Hwa Lin

1412 | **Loss of a Negative Feedback Loop Involving Pea3 and Cyclin D2 Is Required for Pea3-Induced Migration in Transformed Mammary Epithelial Cells**

Franck Ladam, Isabelle Damour, Patrick Dumont, Zoulika Kherrouche, Yvan de Launoit, David Tulasne, and Anne Chotteau-Lelievre

1425 | **Tumor-Secreted LOXL2 Activates Fibroblasts through FAK Signaling**  
Holly E. Barker, Demelza Bird, Georgina Lang, and Janine T. Erler

1448 | **Inhibition of Hedgehog and Androgen Receptor Signaling Pathways Produced Synergistic Suppression of Castration-Resistant Prostate Cancer Progression**

Pramod S. Gowda, Jianhong D. Deng, Sweta Mishra, Abhik Bandyopadhyay, Sitai Liang, Shu Lin, Devalingam Mahalingam, and Lu-Zhe Sun

1462 | **HER-2/neu Mediates Oncogenic Transformation via Altered CREB Expression and Function**  
André Steven, Sandra Leisz, Chiara Massa, Manuela Iezzi, Rossano Lattanzio, Alessia Lamolinara, Jürgen Bukur, Anja Müller, Bernhard Hiebl, Hans-Jürgen Holzhausen, and Barbara Seliger

## SIGNAL TRANSDUCTION

1437 | **ERK-Dependent Downregulation of Skp2 Reduces Myc Activity with HGF, Leading to Inhibition of Cell Proliferation through a Decrease in Id1 Expression**

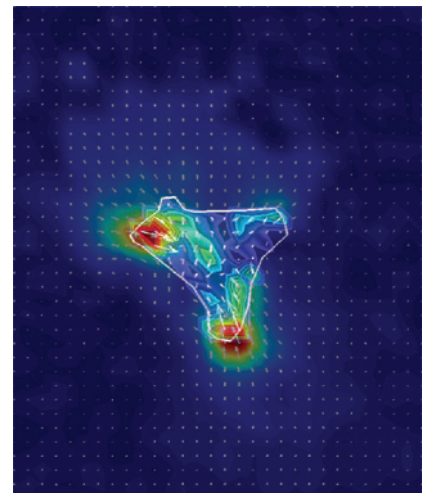
Xiaoran Li, Ying Bian, Yuri Takizawa, Tomio Hashimoto, Toshiyuki Ikoma, Junzo Tanaka, Naomi Kitamura, Yutaka Inagaki, Masayuki Komada, and Toshiaki Tanaka

AC icon indicates Author Choice

For more information please visit [www.aacrjournals.org](http://www.aacrjournals.org)

## ABOUT THE COVER

Twist1 overexpression increases the ability of a single prostate cancer cell to exert traction force upon its surrounding. On the cover, a representative deformation field image is superimposed with the corresponding intracellular traction maps of a Myc-CaP prostate cancer cell overexpressing Twist1 using constrained Fourier transform traction cytometry. The colors within the cells represent the absolute magnitude of tractions in Pascals, and the arrows represent the relative magnitude and directions. Prostate cancer cells overexpressing Twist1 exhibited higher cell traction force than isogenic vector control cells. See article by Gajula and colleagues (beginning on page 1387) for more information.



# Molecular Cancer Research

11 (11)

*Mol Cancer Res* 2013;11:1293-1477.

**Updated version** Access the most recent version of this article at:  
<http://mcr.aacrjournals.org/content/11/11>

**E-mail alerts** [Sign up to receive free email-alerts](#) related to this article or journal.

**Reprints and Subscriptions** To order reprints of this article or to subscribe to the journal, contact the AACR Publications Department at [pubs@aacr.org](mailto:pubs@aacr.org).

**Permissions** To request permission to re-use all or part of this article, use this link <http://mcr.aacrjournals.org/content/11/11>. Click on "Request Permissions" which will take you to the Copyright Clearance Center's (CCC) Rightslink site.