

Highlights of This Issue 1123

PERSPECTIVE

- 1125 | **Unintentional Weakness of Cancers: The MEK-ERK Pathway as a Double-Edged Sword**
Kenichi Suda and Tetsuya Mitsudomi

REVIEWS

- 1129 | **The Pathobiology of Collagens in Glioma**
Leo S. Payne and Paul H. Huang
- 1141 | **Cancer Gene Discovery: Exploiting Insertional Mutagenesis**
Marco Ranzani, Stefano Annunziato, David J. Adams, and Eugenio Montini

MCR **RapidIMPACT**

- 1159 | **Interleukin-6 and Oncostatin-M Synergize with the PI3K/AKT Pathway to Promote Aggressive Prostate Malignancy in Mouse and Human Tissues**
Daniel A. Smith, Atsushi Kiba, Yang Zong, and Owen N. Witte

CELL CYCLE AND SENESCENCE

- 1166 | **Mutual Exclusivity Analysis of Genetic and Epigenetic Drivers in Melanoma Identifies a Link between p14^{ARF} and RAR β Signaling**
Christina Dahl, Claus Christensen, Göran Jönsson, Anders Lorentzen, Mette Louise Skjødt, Åke Borg, Graham Pawelec, and Per Guldborg

CELL DEATH AND SURVIVAL

- 1179 | **TDP1 and PARP1 Deficiency Are Cytotoxic to Rhabdomyosarcoma Cells**
Hok Khim Fam, Cheryl Walton, Sheetal A. Mitra, Miraj Chowdhury, Nichola Osborne, Kunho Choi, Guobin Sun, Patrick C.W. Wong, Maureen J. O'Sullivan, Gulisa Turashvili, Samuel Aparicio, Timothy J. Triche, Mason Bond, Catherine J. Pallen, and Cornelius F. Boerkoel

- 1193 | **AIM2, an IFN-Inducible Cytosolic DNA Sensor, in the Development of Benign Prostate Hyperplasia and Prostate Cancer**
Larissa Ponomareva, Hongzhu Liu, Xin Duan, Eric Dickerson, Hui Shen, Ravichandran Panchanathan, and Divaker Choubey

CHROMATIN, GENE, AND RNA REGULATION

- 1203 | **Angiogenin Mediates Androgen-Stimulated Prostate Cancer Growth and Enables Castration Resistance**
Shuping Li, Miaofen G. Hu, Yeqing Sun, Norie Yoshioka, Soichiro Ibaragi, Jinghao Sheng, Guangjie Sun, Koji Kishimoto, and Guo-Fu Hu
- 1215 | **Menin Directly Represses Gli1 Expression Independent of Canonical Hedgehog Signaling**
Buddha Gurung, Zijie Feng, and Xianxin Hua

DNA DAMAGE AND REPAIR

- 1223 | **53BP1 Is Limiting for NHEJ Repair in ATM-deficient Model Systems That Are Subjected to Oncogenic Stress or Radiation**
Ivana Rybanska-Spaeder, Taylor L. Reynolds, Jeremy Chou, Mansi Prakash, Tameca Jefferson, David L. Huso, Stephen Desiderio, and Sonia Franco

GENOMICS

- 1235 | **Downregulation of HOPX Controls Metastatic Behavior in Sarcoma Cells and Identifies Genes Associated with Metastasis**
Denisa Kovářová, Jiří Plachý, Jan Kosla, Kateřina Trejbalová, Vladimír Čermák, and Jiří Hejnar

ONCOGENES AND TUMOR SUPPRESSORS

- 1248 | **Breast Cancer Metastasis Suppressor-1 Promoter Methylation in Primary Breast Tumors and Corresponding Circulating Tumor Cells**
Maria Chimonidou, Galatea Kallergi, Vassilis Georgoulas, Danny R. Welch, and Evi S. Lianidou

1258

The Small Cell Lung Cancer-Specific Isoform of RE1-Silencing Transcription Factor (REST) Is Regulated By Neural-Specific Ser/Arg Repeat-Related Protein of 100 kDa (nSR100)

Masahito Shimojo, Yoshie Shudo, Masatoshi Ikeda, Tomoyo Kobashi, and Seiji Ito

1279

Jianhua Wang, and Kunwei Shen
Minocycline Targets the NF- κ B Nexus through Suppression of TGF- β 1-TAK1-I κ B Signaling in Ovarian Cancer

Parvin Ataie-Kachoei, Samina Badar, David L. Morris, and Mohammad H. Pourgholami

CORRECTION

SIGNAL TRANSDUCTION

1269



Dual Inhibition of PI3K and mTOR Mitigates Compensatory AKT Activation and Improves Tamoxifen Response in Breast Cancer

Xiaosong Chen, Meizhong Zhao, Mingang Hao, Xueqing Sun, Jinglong Wang, Yan Mao, Lidong Zu, Junjun Liu, Yandong Shen,

1292

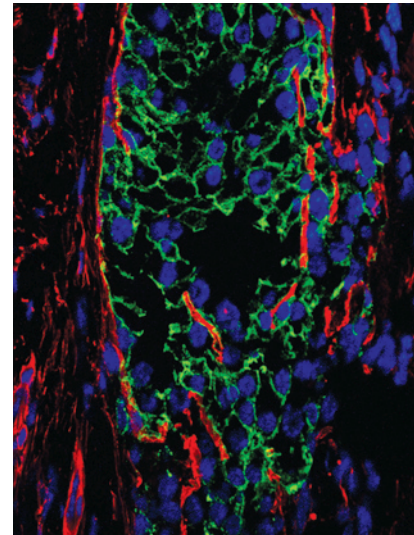
Correction: CTCF and BORIS Regulate Rb2/p130 Gene Transcription: A Novel Mechanism and a New Paradigm for Understanding the Biology of Lung Cancer

AC icon indicates Author Choice

For more information please visit www.aacrjournals.org

ABOUT THE COVER

Invasive growth into the surrounding mesenchyme is a hallmark of tumor malignancy and is a key step in the metastatic process. The cover art identifies PTEN-knockout prostate epithelial cells (e-cadherin, green) invading through the basement membrane (collagen IV, red) in response to stromal expression of the cytokine interleukin-6. This suggests that signaling molecules commonly associated with the pro-inflammatory tumor microenvironment can synergize with existing oncogenes to promote tumor progression. For more information please see the article by Smith and colleagues on page 1159.



Molecular Cancer Research

11 (10)

Mol Cancer Res 2013;11:1123-1292.

Updated version Access the most recent version of this article at:
<http://mcr.aacrjournals.org/content/11/10>

E-mail alerts [Sign up to receive free email-alerts](#) related to this article or journal.

Reprints and Subscriptions To order reprints of this article or to subscribe to the journal, contact the AACR Publications Department at pubs@aacr.org.

Permissions To request permission to re-use all or part of this article, use this link <http://mcr.aacrjournals.org/content/11/10>. Click on "Request Permissions" which will take you to the Copyright Clearance Center's (CCC) Rightslink site.