

Highlights of This Issue 1

EDITORIAL

- 3 | **Middlegame Theory, Cancer Style: A Message from the Editor-in-Chief**
Karen E. Knudsen

REVIEW

- 5 | **Radiation Survivors: Understanding and Exploiting the Phenotype following Fractionated Radiation Therapy**
Adeola Y. Makinde, Molykutty John-Aryankalayil, Sanjeevani T. Palayoor, David Cerna, and C. Norman Coleman

PERSPECTIVE

- 13 | **Predicting Enhanced Cell Killing through PARP Inhibition**
Julie K. Horton and Samuel H. Wilson

CELL CYCLE AND SENEESCENCE

- 19 | **Human Papilloma Virus (HPV) E7-Mediated Attenuation of Retinoblastoma (Rb) Induces hPygopus2 Expression via Elf-1 in Cervical Cancer**
Youlian R. Tzenov, Phillip G. Andrews, Kim Voisey, Paul Popadiuk, Jieying Xiong, Catherine Popadiuk, and Kenneth R. Kao

CELL DEATH AND SURVIVAL

- 31 | **STAT3-RANTES Autocrine Signaling Is Essential for Tamoxifen Resistance in Human Breast Cancer Cells**
Eun Hee Yi, Chang Seok Lee, Jin-Ku Lee, Young Ju Lee, Min Kyung Shin, Chung-Hyun Cho, Keon Wook Kang, Jung Weon Lee, Wonshik Han, Dong-Young Noh, Yong-Nyun Kim, Ik-Hyun Cho, and Sang-kyu Ye

CHROMATIN, GENE, AND RNA REGULATION

- 43 | **The Novel miR-7515 Decreases the Proliferation and Migration of Human Lung Cancer Cells by Targeting c-Met**
Ji Min Lee, Jung Ki Yoo, Hanna Yoo, Ho Yong Jung, Dong Ryul Lee, Hye Cheol Jeong, Seoung Hun Oh, Hyung Min Chung, and Jin Kyeong Kim
- 54 | **Contribution of HIF-1 α in 4E-BP1 Gene Expression**
Rania Azar, Charline Lasfargues, Corinne Bousquet, and Stéphane Pyronnet

ONCOGENES AND TUMOR SUPPRESSORS

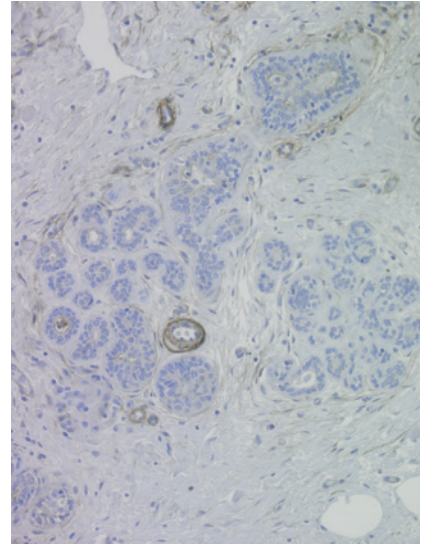
- 62 | **Targeted Inactivation of HDAC2 Restores p16^{INK4a} Activity and Exerts Antitumor Effects on Human Gastric Cancer**
Jeong Kyu Kim, Ji Heon Noh, Jung Woo Eun, Kwang Hwa Jung, Hyun Jin Bae, Qingyu Shen, Min Gyu Kim, Young Gyoong Chang, Seung-Jin Kim, Won Sang Park, Jung Young Lee, Jürgen Borlak, and Suk Woo Nam

SIGNAL TRANSDUCTION

- 74 | **Multiple Functions of Sushi Domain Containing 2 (SUSD2) in Breast Tumorigenesis**
Allison P. Watson, Rick L. Evans, and Kristi A. Eglund
- 86 | **Regulation of CXCR4-Mediated Invasion by DARPP-32 in Gastric Cancer Cells**
Shoumin Zhu, Jun Hong, Manish K Tripathi, Vikas Sehdev, Abbas Belkhiri, and Wael El-Rifai
- 95 | **Genetic Ablation of the Tetraspanin CD151 Reduces Spontaneous Metastatic Spread of Prostate Cancer in the TRAMP Model**
Ben T. Copeland, Matthew J. Bowman, and Leonie K. Ashman

ABOUT THE COVER

SUSD2 (Sushi Domain Containing 2) is a membrane surface protein that plays a role in immune evasion promoting breast tumorigenesis. Immunohistochemical analysis of SUSD2 in benign breast tissue was performed using an anti-SUSD2 antibody followed by counterstaining with hematoxylin. Brown stain indicates the presence of SUSD2. Weak to no staining was observed in normal epithelial cells of benign ducts and lobules; however, staining was present in the endothelial cells lining blood vessels. For further details, please see Watson and colleagues on page 74 in this issue.



Molecular Cancer Research

11 (1)

Mol Cancer Res 2013;11:1-105.

Updated version Access the most recent version of this article at:
<http://mcr.aacrjournals.org/content/11/1>

E-mail alerts [Sign up to receive free email-alerts](#) related to this article or journal.

Reprints and Subscriptions To order reprints of this article or to subscribe to the journal, contact the AACR Publications Department at pubs@aacr.org.

Permissions To request permission to re-use all or part of this article, use this link <http://mcr.aacrjournals.org/content/11/1>. Click on "Request Permissions" which will take you to the Copyright Clearance Center's (CCC) Rightslink site.