

Highlights of This Issue 1401

REVIEW

- 1403 | **Cancer-Associated Fibroblasts Drive the Progression of Metastasis through both Paracrine and Mechanical Pressure on Cancer Tissue**
George S. Karagiannis, Theofilos Poutahidis, Susan E. Erdman, Richard Kirsch, Robert H. Riddell, and Eleftherios P. Diamandis

ANGIOGENESIS, METASTASIS, AND THE CELLULAR MICROENVIRONMENT

- 1419 | **The Lymphotactin Receptor Is Expressed in Epithelial Ovarian Carcinoma and Contributes to Cell Migration and Proliferation**
Mijung Kim, Lisa Rooper, Jia Xie, Jamie Rayahin, Joanna E. Burdette, Andre A. Kajdacsy-Balla, and Maria V. Barbolina
- 1430 | **Anti-IL-20 Monoclonal Antibody Alleviates Inflammation in Oral Cancer and Suppresses Tumor Growth**
Yu-Hsiang Hsu, Chi-Chen Wei, Dar-Bin Shieh, Chien-Hui Chan, and Ming-Shi Chang

CANCER GENES AND GENOMICS

- 1440 | **Functional Effects of GRM1 Suppression in Human Melanoma Cells**
Janet Wangari-Talbot, Brian A. Wall, James S. Goydos, and Suzie Chen

CELL CYCLE, CELL DEATH, AND SENEESCENCE

- 1451 | **Multiple Isoforms of CDC25 Oppose ATM Activity to Maintain Cell Proliferation during Vertebrate Development**
Daniel Verduzco, Jennifer Shepard Dovey, Abhay A. Shukla, Elisabeth Kodym, Brian A. Skaug, and James F. Amatruda

- 1462 | **SUZ12 Promotes Human Epithelial Ovarian Cancer by Suppressing Apoptosis via Silencing HRK**
Hua Li, Qi Cai, Hong Wu, Vinod Vathipadikeal, Zachary C. Dobbin, Tianyu Li, Xiang Hua, Charles N. Landen, Michael J. Birrer, Margarita Sánchez-Beato, and Rugang Zhang

- 1473 | **Roles of Estrogen Receptor and p21^{Waf1} in Bortezomib-Induced Growth Inhibition in Human Breast Cancer Cells**
Marie Maynadier, Jingxue Shi, Ophélie Vaillant, Magali Gary-Bobo, Ilaria Basile, Michel Gleizes, Anne-Marie Cathiard, Jonathan Lee Tin Wah, M. Saeed Sheikh, and Marcel Garcia

- 1482 | **TLE1 Is an Anoikis Regulator and Is Downregulated by Bit1 in Breast Cancer Cells**
Chris Brunquell, Hector Biliran, Scott Jennings, Shubha Kale Ireland, Renwei Chen, and Erkki Ruoslahti

SIGNALING AND REGULATION

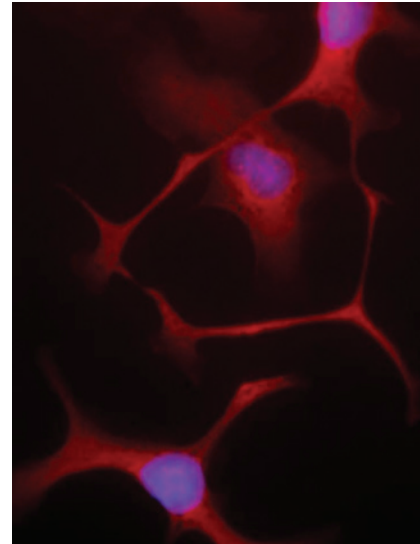
- 1496 | **The Hedgehog Receptor Patched Functions in Multidrug Transport and Chemotherapy Resistance**
Michel Bidet, Amandine Tomico, Patrick Martin, H el ene Guizouarn, Patrick Mollat, and Isabelle Mus-Veteau

CORRECTION

- 1509 | **Correction: The Proteasome Activator PA200 Regulates Tumor Cell Responsiveness to Glutamine and Resistance to Ionizing Radiation**

ABOUT THE COVER

Chemokine receptors play a role in cell proliferation, migration, adhesion, as well as homing of tumor cells to their metastatic niches. A member of the chemokine family of receptor proteins, lymphotactin (XCR1), is expressed in primary and metastatic epithelial ovarian carcinoma and supports XCL1/2-induced tumor cell migration and proliferation and formation of metastasis on diaphragm and peritoneal wall. Using immunofluorescence it was demonstrated that ovarian carcinoma cell lines express XCR1. For details, see the article by Kim et al. on page 1419.



Molecular Cancer Research

10 (11)

Mol Cancer Res 2012;10:1401-1509.

Updated version Access the most recent version of this article at:
<http://mcr.aacrjournals.org/content/10/11>

E-mail alerts [Sign up to receive free email-alerts](#) related to this article or journal.

Reprints and Subscriptions To order reprints of this article or to subscribe to the journal, contact the AACR Publications Department at pubs@aacr.org.

Permissions To request permission to re-use all or part of this article, use this link <http://mcr.aacrjournals.org/content/10/11>. Click on "Request Permissions" which will take you to the Copyright Clearance Center's (CCC) Rightslink site.