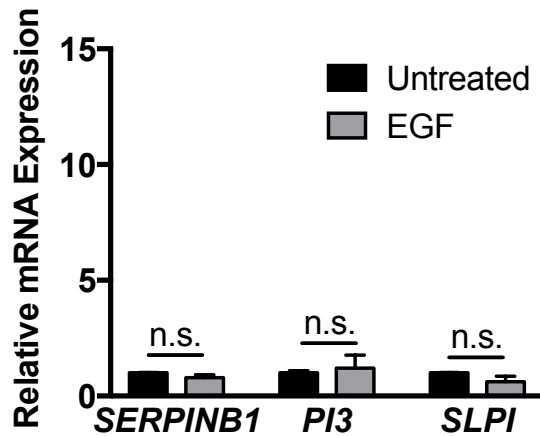
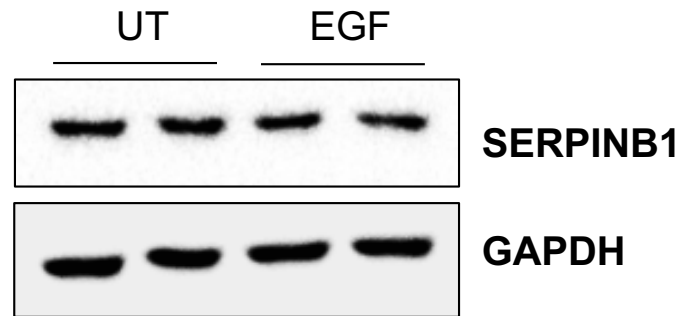


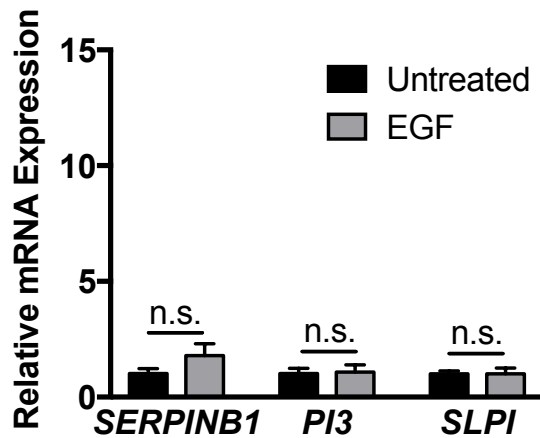
### A. DU145



### B. DU145



### C. LNCaP



**Supplementary Figure 2. EGF does not induce *SERPINB1* expression in prostate cancer cells.** A. DU145 cells were serum starved and treated with EGF (20 ng/mL) for 4 hours. mRNA expression of *SERPINB1*, *PI3*, and *SLPI* were determined using quantitative PCR and normalized to *GAPDH*. Data were normalized to untreated samples, and differences were assessed using Student's t-test (n = 3, n.s. = not significant). B. DU145 cells were serum starved and treated with EGF (20 ng/mL) for 24 hours. *SERPINB1* expression was determined using Western blot. *GAPDH* was used as a loading control. A representative blot with two of each treatment is shown. C. LNCaP cells were treated and analyzed for *SERPINB1*, *PI3*, and *SLPI* expression as described above (n = 3, n.s. = not significant). As expected, no *SERPINB1* protein was detected in the LNCaP extracts (not shown).