

Highlights of This Issue 359

CELL CYCLE AND SENEESCENCE

- 361** Dual Inhibition of CDK4 and CDK2 via Targeting p27 Tyrosine Phosphorylation Induces a Potent and Durable Response in Breast Cancer Cells

Priyank Patel, Vladislav Tshiperson, Susan R.S. Gottesman, Jonathan Somma, and Stacy W. Blain

CELL DEATH AND SURVIVAL

- 378** Targeting CDK1 and MEK/ERK Overcomes Apoptotic Resistance in BRAF-Mutant Human Colorectal Cancer

Peng Zhang, Hisato Kawakami, Weizhen Liu, Xiangyu Zeng, Klaus Strebhardt, Kaixiong Tao, Shengbing Huang, and Frank A. Sinicrope

CHROMATIN, EPIGENETICS AND RNA REGULATION

- 390** Epigenetically Regulated Chromosome 14q32 miRNA Cluster Induces Metastasis and Predicts Poor Prognosis in Lung Adenocarcinoma Patients

Margarita González-Vallinas, Manuel Rodríguez-Paredes, Marco Albrecht, Carsten Sticht, Damian Stichel, Julian Gutekunst, Adriana Pitea, Steffen Sass, Francisco J. Sánchez-Rivera, Justo Lorenzo-Bermejo, Jennifer Schmitt, Carolina De La Torre, Arne Warth, Fabian J. Theis, Nikola S. Müller, Norbert Gretz, Thomas Muley, Michael Meister, Darjus F. Tschaharganeh, Peter Schirmacher, Franziska Matthäus, and Kai Breuhahn

- 403** Differential Regulation of *LET-7* by *LIN28B* Isoform-Specific Functions

Rei Mizuno, Priya Chatterji, Sarah Andres, Kathryn Hamilton, Lauren Simon, Shawn W. Foley, Arjun Jeganathan, Brian D. Gregory, Blair Madison, and Anil K. Rustgi

- 417** Epigenetic Reprogramming of Pericentromeric Satellite DNA in Premalignant and Malignant Lesions

Nadine Heidi Brückmann, Christina Bøg Pedersen, Henrik Jørn Ditzel, and Morten Frier Gjerstorff

DNA DAMAGE AND REPAIR

- 428** Imprecision and DNA Break Repair Biased towards Incompatible End Joining in Leukemia

Franz Josef Gassner, Maria Schubert, Stefan Rebhandl, Karina Spandl, Nadja Zaborsky, Kemal Catakovic, Stephanie Blaimer, Daniel Hebenstreit, Richard Greil, and Roland Geisberger

METABOLISM

- 439** BRCA1 through Its E3 Ligase Activity Regulates the Transcription Factor Oct1 and Carbohydrate Metabolism

Karina Vázquez-Arreguín, Jessica Maddox, Jinsuk Kang, Dongju Park, Reuben R. Cano, Rachel E. Factor, Thomas Ludwig, and Dean Tantin

- 453** Targeted AKT Inhibition in Prostate Cancer Cells and Spheroids Reduces Aerobic Glycolysis and Generation of Hyperpolarized [^{13}C] Lactate

Sui Seng Tee, Izabela Suster, Steven Truong, Sangmoo Jeong, Roozbeh Eskandari, Valentina DiGialleonardo, Julio A. Alvarez, Hannah N. Aldeborgh, and Kayvan R. Keshari

GENOMICS

- 461** Population-dependent Intron Retention and DNA Methylation in Breast Cancer

Dongwook Kim, Manu Shivakumar, Seonggyun Han, Michael S. Sinclair, Young-Ji Lee, Yonglan Zheng, Olufunmilayo I. Olopade, Dokyoon Kim, and Younghee Lee

- 470** Novel Intergenically Spliced Chimera, *NFATC3-PLA2G15*, Is Associated with Aggressive T-ALL Biology and Outcome

Jonathan Bond, Christine Tran Quang, Guillaume Hypolite, Mohamed Belhocine, Aurélie Bergon, Gaëlle Cordonnier, Jacques Ghysdael, Elizabeth Macintyre, Nicolas Boissel, Salvatore Spicuglia, and Vahid Asnafi

- 476** Multi-omics Approach Reveals Distinct Differences in Left- and Right-Sided Colon Cancer

Wangxiong Hu, Yanmei Yang, Xiaofen Li, Minran Huang, Fei Xu, Weiting Ge, Suzhan Zhang, and Shu Zheng

Table of Contents

ONCOGENES AND TUMOR SUPPRESSORS

- 486** Proximal Aberrant Crypt Foci Associate with Synchronous Neoplasia and Are Primed for Neoplastic Progression
David A. Drew, Allen Mo, James J. Grady, Richard G. Stevens, Joel B. Levine, Bruce M. Brenner, Joseph C. Anderson, Faripour Forouhar, Michael J. O'Brien, Thomas J. Devers, and Daniel W. Rosenberg
- 496** Establishment of the First Well-differentiated Human Pancreatic Neuroendocrine Tumor Model
Daniel Benten, Yasmin Behrang, Ludmilla Unrau, Victoria Weissmann, Gerrit Wolters-Eisfeld, Susanne Burdak-Rothkamm, Felix R. Stahl, Martin Anlauf, Patricia Grabowski, Markus Möbs, Jan Dieckhoff, Bence Sipos, Martina Fahl, Corinna Eggers, Daniel Perez, Maximillian Bockhorn, Jakob R. Izbicki, Ansgar W. Lohse, and Jörg Schrader
- 508** Keap1 Inhibits Metastatic Properties of NSCLC Cells by Stabilizing Architectures of F-Actin and Focal Adhesions
Bo Wu, Shu Yang, Haimei Sun, Tingyi Sun, Fengqing Ji, Yurong Wang, Lie Xu, and Deshan Zhou
- 517** Centriole Overduplication is the Predominant Mechanism Leading to Centrosome Amplification in Melanoma
Ryan A. Denu, Maria Shabbir, Minakshi Nihal, Chandra K. Singh, B. Jack Longley, Mark E. Burkard, and Nihal Ahmad

SIGNAL TRANSDUCTION

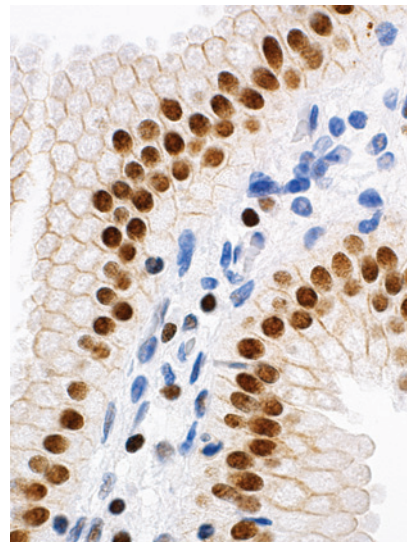
- 528** Nanoscale Tuning of VCAM-1 Determines VLA-4-Dependent Melanoma Cell Plasticity on RGD Motifs
Katharina Amschler, Eugen Kossmann, Luise Erpenbeck, Sebastian Kruss, Tillmann Schill, Margarete Schön, Sigrid M.C. Möckel, Joachim P. Spatz, and Michael P. Schön
- 543** TANKYRASE Inhibition Enhances the Antiproliferative Effect of PI3K and EGFR Inhibition, Mutually Affecting β -CATENIN and AKT Signaling in Colorectal Cancer
Nina T. Solberg, Jo Waaler, Kaja Lund, Line Mygland, Peter A. Olsen, and Stefan Krauss
- 554** Stemness Is Enhanced in Gastric Cancer by a SET/PP2A/E2F1 Axis
Shubei Enjoji, Ryotaro Yabe, Shunya Tsuji, Kazuhiro Yoshimura, Hideyoshi Kawasaki, Masashi Sakurai, Yusuke Sakai, Hiroko Takenouchi, Shigefumi Yoshino, Shoichi Hazama, Hiroaki Nagano, Hiroko Oshima, Masanobu Oshima, Michael P. Vitek, Tetsuya Matsuura, Yoshitaka Hippo, Tatsuya Usui, Takashi Ohama, and Koichi Sato

 AC icon indicates AuthorChoice

For more information please visit www.aacrjournals.org

ABOUT THE COVER

In this issue, a study by Brückmann and colleagues (beginning on page 417) demonstrates a novel epigenetic perturbation specific to premalignant and malignant cells. They show that chromosome 1q12 pericentromeric satellite DNA is epigenetically reprogrammed into a polycomb state forming subnuclear domains called polycomb bodies. The cover image shows the chromatin-associated distribution of polycomb protein BMI1 in the gallbladder, as it occurs in non-malignant tissues. This shift in epigenetic regulation of 1q12 satellite DNA presented by the authors may be used as an early diagnostic marker or new therapeutic target.



Molecular Cancer Research

16 (3)

Mol Cancer Res 2018;16:359-563.

Updated version Access the most recent version of this article at:
<http://mcr.aacrjournals.org/content/16/3>

E-mail alerts [Sign up to receive free email-alerts](#) related to this article or journal.

Reprints and Subscriptions To order reprints of this article or to subscribe to the journal, contact the AACR Publications Department at pubs@aacr.org.

Permissions To request permission to re-use all or part of this article, use this link <http://mcr.aacrjournals.org/content/16/3>. Click on "Request Permissions" which will take you to the Copyright Clearance Center's (CCC) Rightslink site.