

# Beyond the Cell Cycle: Enhancing the Immune Surveillance of Tumors Via CDK4/6 Inhibition

Andrea C. Chaikovsky<sup>1,2</sup> and Julien Sage<sup>1,2</sup>



## Abstract

Inhibitors of the cyclin-dependent kinases 4 and 6 (CDK4/6) were originally designed to block proliferation and cell cycle progression of cancer cells in which the activity of these kinases is dysregulated. CDK4/6 inhibitors have already been FDA approved for the treatment of estrogen receptor (ER)-positive breast cancer and are being tested in numerous other cancer types. However, several recent studies have identified novel effects of CDK4/6 inhibitors

on tumor growth, most notably an indirect effect resulting from the activation of immune surveillance. This Perspective discusses these recent observations, including the effects that CDK4/6 inhibitors may have on immune cells themselves. It is likely that CDK4/6 inhibitors will have a broader impact than their expected induction of cell cycle arrest in the treatment of human cancers. *Mol Cancer Res*; 16(10); 1454–7. ©2018 AACR.

## Introduction

The RB pathway has been elucidated biochemically and genetically in the past 30 years. In the canonical pathway, complexes of cyclin-dependent kinases (CDK) and their partner cyclins (Cyc), specifically CycD/CDK4,6 and CycE/CDK2, phosphorylate RB (and its family members p107 and p130), resulting in RB inactivation. This allows for the activation of E2F transcription factors that promote the transcription of genes whose products are critical for cell cycle progression in G<sub>1</sub>–S (reviewed in refs. 1–3). Accumulating evidence indicates that the RB pathway is more complex than initially described and that noncanonical roles not only exist in cells but also play a role in cancer (3, 4). Nevertheless, inhibitors of CDK4/6 and CDK2 have been developed with the general idea of reactivating the canonical function of RB in cells in which the *RB1* gene is not silenced, deleted, or mutated, thereby arresting cancer cells in G<sub>0</sub>/G<sub>1</sub> and blocking tumor growth (5). In particular, a number of selective CDK4/6 inhibitors have been developed and FDA approved or are in clinical trials in several types of human cancers (e.g., refs. 6–10). Recent observations indicate that these CDK4/6 inhibitors may have a broader anticancer role, beyond their direct antiproliferative effects on cancer cells.

### Immunostimulatory effects of CDK4/6 inhibitors on cancer cells and the tumor microenvironment

A first study by Goel and colleagues showed that CDK4/6 inhibition promotes antitumor immunity through multiple mechanisms (11). In this study, inhibition of CDK4/6 by abemaciclib in breast cancer cells was associated with an increase in

antigen presentation, in addition to the expected downregulation of cell cycle genes. These observations support early studies in which RB activity was connected to increased antigen presentation in response to IFN $\gamma$  (12, 13). Mechanistically, the authors of this new study noted an increase in type III IFN molecules upon abemaciclib treatment, which they linked to the induction of endogenous retroviral genes (ERV; Fig. 1A). This induction of ERVs was mediated by the hypomethylation of their genomic loci due to the downregulation of the DNA methyltransferase DNMT1, a direct E2F target whose expression is repressed when RB is activated upon CDK4/6 inhibition. Thus, abemaciclib treatment may induce a response similar to an antiviral response in cancer cells that are RB wild-type. In addition, CDK4/6 inhibition led to a reduction in immunosuppressive regulatory T cells (Tregs) in the tumor microenvironment (Fig. 1B), possibly due to an enhanced cell cycle inhibition specifically in these cells due to higher levels of cell cycle molecules such as RB itself. Thus, while this study was focused on RB wild-type cancer cells, some of the effects of CDK4/6 inhibition could lead to therapeutic benefit in RB-deficient tumors as well via the relative inhibition of Tregs versus anticancer immune cells.

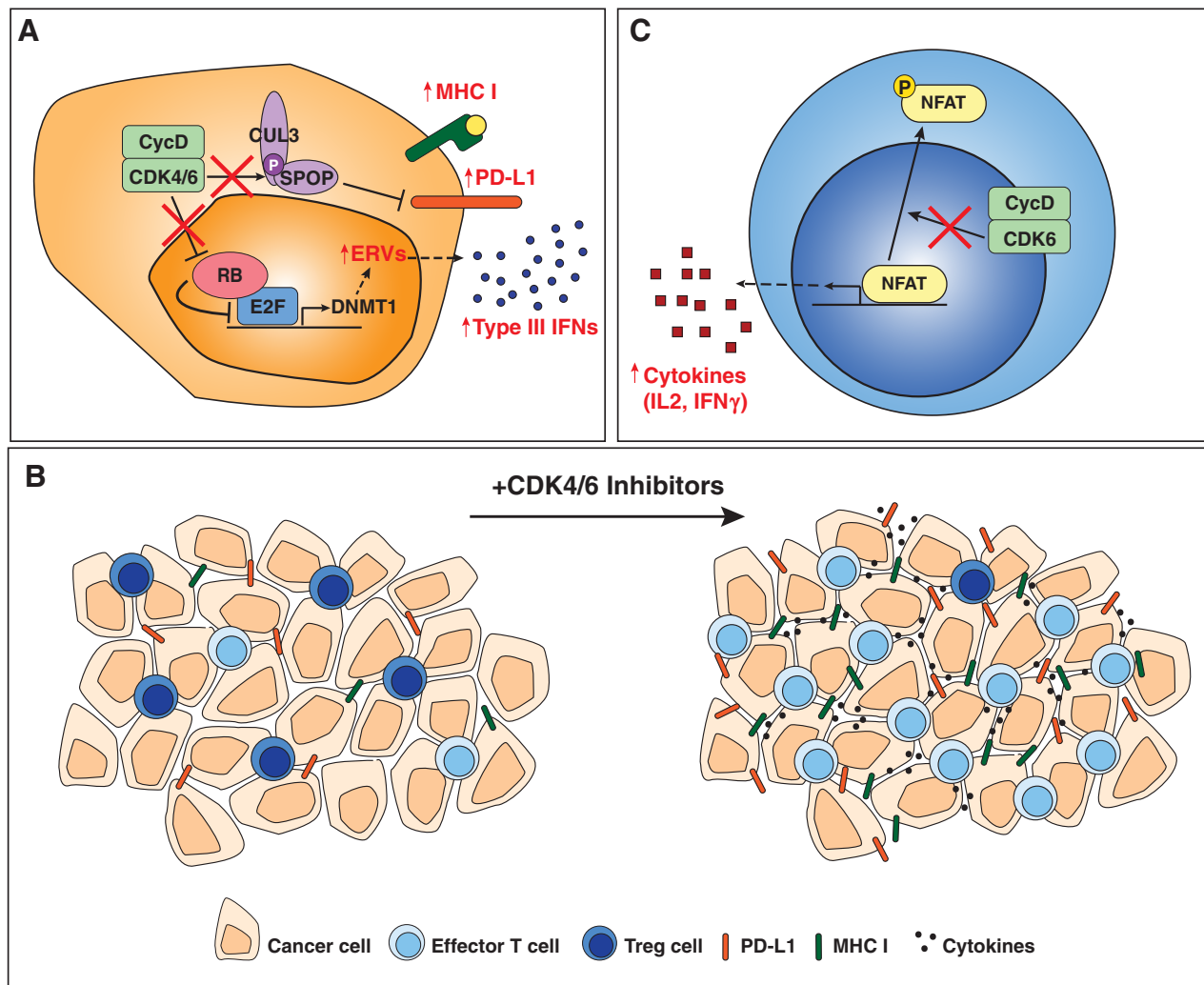
A study by Teo and colleagues, investigating the combination of CDK4/6 and PI3Kalpha inhibitors in triple-negative breast cancer, also identified critical effects of CDK4/6 inhibition on the tumor microenvironment. The authors showed that the combination of CDK4/6 and PI3Kalpha inhibitors is synergistic in RB wild-type triple-negative breast cancer cells, in part by promoting immune responses (14). In addition to enhancing the death of cancer cells, this combination therapy led to an increase in T-cell activation and a decrease in immunosuppressive cell populations, such as monocytic myeloid-derived suppressor cells and Tregs, through mechanisms that are not yet clear. These effects were observed mainly with combination treatment, and not with CDK4/6 inhibitor alone as reported by Goel and colleagues, which may reflect differences among CDK4/6 inhibitors (ribociclib vs. abemaciclib), breast cancer subtypes (triple-negative vs. HER2-positive), or a combination of the two. Importantly, Teo and colleagues demonstrated that the addition of immune checkpoint blockade (anti-PD1 and anti-CTLA4) to the combination of CDK4/6 and PI3Kalpha inhibitors resulted in a further

<sup>1</sup>Department of Pediatrics, Stanford University School of Medicine, Stanford, California. <sup>2</sup>Department of Genetics, Stanford University School of Medicine, Stanford, California.

**Corresponding Author:** Julien Sage, Department of Pediatrics, Stanford University, SIM1, 265 Campus Drive, Stanford, CA 94305. Phone: 650-723-5113; Fax: 650-736-0195; E-mail: julsage@stanford.edu.

doi: 10.1158/1541-7786.MCR-18-0201

©2018 American Association for Cancer Research.



**Figure 1.** Noncanonical anticancer effects of CDK4/6 inhibitors. **A**, In response to CDK4/6 inhibition (indicated by red X's and red text), cancer cells upregulate MHC I at their surface, and, in an RB-dependent mechanism (see main text), produce IFNs. These effects may activate the anticancer activity of immune cells. CDK4/6 inhibition also leads to PD-L1 upregulation, which suggests that CDK4/6 inhibitors may be combined effectively with PD-L1 blockade in the clinic. **B**, At the cellular level, treatment with CDK4/6 inhibitors stimulate anticancer immune responses in the tumor microenvironment, including a decrease in Tregs, an increase in effector T cells, and higher levels of immunostimulatory molecules, concomitant with increased levels of PD-L1. **C**, CDK4/6 inhibition in T cells results in NFAT activation and the production of cytokines that can also enhance the activity of immune cells against cancer cells.

enhancement of antitumor responses, providing additional support for the idea that CDK4/6 inhibition could be used in combination with strategies aiming at stimulating the immune system.

#### Novel roles for CDK4/6 in immune-related molecular pathways

In a related study, Deng and colleagues investigated kinase inhibitors that enhance IL2 secretion, an indicator of T-cell activation, in Jurkat T cells (15). In this screen, they identified CDK4/6 inhibitors (palbociclib and trilaciclib) as activators of IL2 production, and went on to show that CDK6 can directly phosphorylate and inhibit NFAT4, a known regulator of IL2 secretion, in both Jurkat cells and primary human CD4<sup>+</sup> T cells (Fig. 1C). These data suggest a role for CDK6 in the regulation of NFAT activity in T cells, which could provide another mechanism by

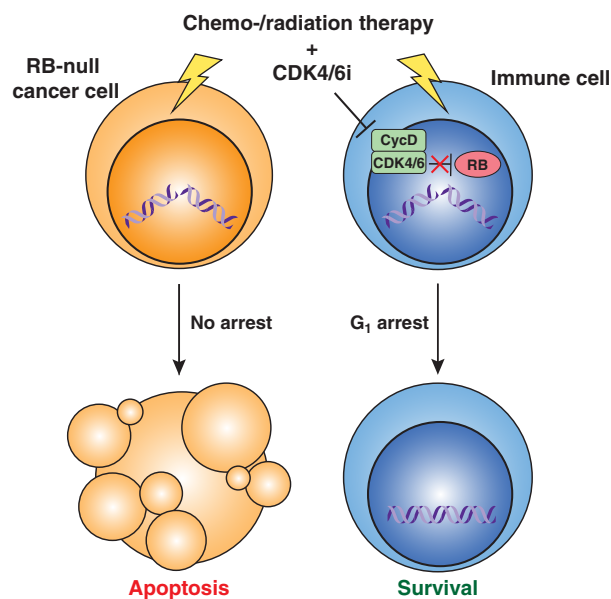
which CDK4/6 inhibition may enhance T-cell activation. The authors also found that treatment with CDK4/6 inhibitors can lead to an increased percentage of effector cells within the tumor microenvironment in mouse models of lung cancer. This increase of effector T-cell function occurred even in the presence of Tregs. Combination of PD-1 blockade and CDK4/6 inhibition was synergistic, and the effects of CDK4/6 inhibition were mediated at least in part by T cells, as depletion of CD4<sup>+</sup> or CD8<sup>+</sup> T cells abrogated this response. Similar to the previous studies, Tregs were shown to be more sensitive to the antiproliferative effects of CDK4/6 inhibition than other immune cells. As discussed by the authors, it is likely that the increased secretion of IFN $\gamma$  from CD8<sup>+</sup> T cells, even in the presence of Tregs, depends on properly timed doses of CDK4/6 inhibitors, which will be key for the use of these inhibitors in the clinic.

Similar observations were made by Schaer and colleagues in colon cancer cells (16): abemaciclib treatment resulted in enhanced intratumoral T-cell activation and inflammation, and a phased combination therapy regimen with abemaciclib and anti-PD-L1 therapy led to the greatest tumor regression. At the molecular level, this study found a direct effect in T cells that again involved the modulation of NFAT activity and increased expression of IL2 and TNF $\alpha$  after abemaciclib treatment. Interestingly, the combination therapy in this study led not only to the direct activation of T cells, but also to the modulation of innate immunity through mechanisms that enhance antigen presentation and T-cell priming by dendritic cells. Together, these studies demonstrate that the anticancer effects of CDK4/6 inhibitors through T cells, and perhaps other immune cells, may apply to several cancer types, thereby extending the reach of CDK4/6 inhibitors in the clinic.

Zhang and colleagues identified another novel function of CDK4/6 by exploring mechanisms that control PD-L1 expression and stability (17). The authors first showed that PD-L1 levels fluctuate with cell cycle progression, with higher levels in M and early G<sub>1</sub> phases. They identified an inverse correlation between CDK4/6 activity and PD-L1 expression in cancer cells. Genetic ablation of D-type cyclins or CDK4/6 inhibition resulted in increased PD-L1 expression and a reduction in CD3<sup>+</sup> tumor-infiltrating lymphocytes (TILs) in a breast cancer model *in vivo*. This reduction in TILs seems to contradict the increased antitumor immunity reported by other studies. However, because CD3 is expressed by both Tregs and effector T cells, the decrease in CD3<sup>+</sup> cells may result largely from the decreased proliferation of Tregs. Other measures of effector T-cell activity were not reported in this study. Mechanistically, the authors identified the Cullin 3-based E3 ligase and the adaptor Speckle-type POZ protein (SPOP) as key inhibitors of PD-L1 protein levels. CycD/CDK4/6 directly phosphorylates SPOP, which promotes the stability of SPOP itself. Palbociclib treatment reduces this phosphorylation, which destabilizes SPOP, and therefore stabilizes PD-L1 (Fig. 1A). Importantly, human tumors with mutations in the C-terminal PD-L1 degron are mutually exclusive with tumors with mutations in the substrate-binding MATH domain of SPOP, suggesting a functional link. It is thus possible that the enhanced tumorigenic effect of SPOP mutations are due to increased PD-L1 levels and attenuation of immune responses (Fig. 1B). This work identifies an additional level of regulation of the immune system by CDK4/6 and another instance in which combination of CDK4/6 inhibition and PD-L1 blockade could result in increased antitumor responses.

#### Protecting immune cells from radiation or chemotherapy with CDK4/6 inhibitors

These studies are particularly timely given the recent clinical trials by G1 Therapeutics with their CDK4/6 inhibitor trilaciclib (also known as G1T28). In RB-deficient tumors, inhibition of CDK4/6 activity rarely affects the proliferation of the cancer cells themselves, but may stop the proliferation of T cells. While such an induction of cell-cycle arrest can be detrimental in the long term, it could prove beneficial in the short term. Treatment with radiotherapy or chemotherapy kills proliferating cells, including T cells, and the addition of CDK4/6 inhibitors may protect immune cells from these effects by slowing their cell cycle and allowing more time for DNA repair (Fig. 2). This elegant concept is



**Figure 2.**

Using canonical effects of CDK4/6 inhibitors in RB-deficient cancer. In RB-deficient cancer cells, inhibition of CDK4/6 (CDK4/6i) cannot activate the G<sub>1</sub> checkpoint and does not result in cell cycle arrest; in these cells, chemotherapy and/or radiation can induce DNA damage and subsequent cell death. In contrast, immune cells arrest in G<sub>1</sub> after CDK4/6i (e.g., trilaciclib, see main text), which can provide some protection from the death-inducing effects of chemo-/radiotherapy, including by preventing DNA damage that would otherwise occur in S-phase or by providing more time to repair DNA damage.

supported by strong preclinical and clinical data (18–20), which show preservation of both lymphoid and myeloid lineages. Again, the dosing schedule will be critical for providing maximum benefit to the immune system while avoiding negative side effects, but the current clinical data suggest that CDK4/6 inhibitors could prove beneficial in a wider range of cancers than previously considered. While this strategy is promising, it is worth noting that prolonged treatment with CDK4/6 inhibitors may induce senescence in stromal cells, which, in some cases, may promote the growth of cancer cells (21).

#### Concluding remarks

In conclusion, CDK4/6 inhibitors, and perhaps CDK2 inhibitors once more specific compounds are developed, are certainly attractive molecules to slow or stop the growth of cancer cells that are wild-type for RB function. However, in these tumors, and possibly in RB-mutant tumors, CDK4/6 inhibition may also enhance the anticancer effects of the immune system by increasing antigen presentation and cytokine secretion by cancer cells. While some level of immune system activation may be expected in cases where CDK4/6 inhibitors induce senescence, increased anticancer immunity is observed even in the absence of the senescence-associated secretory phenotype (10, 14). Furthermore, CDK4/6 inhibitors may have direct effects on noncancer cells in the tumor microenvironment, particularly antitumor immune cells, which could lead to new combination therapies in a broad range of cancer types. Of course, these effects may be complex and not always anticancer. First, RB activity may control the expression of

genes involved in multiple immune response pathways (22). Second, CDK4/6 inhibitors may affect neutrophils and neutrophil extracellular traps (23), which may promote or inhibit cancer depending on the context (24). Third, accumulating evidence shows that oncogenic pathways influence the interactions between cancer cells and immune cells, directly and indirectly (25). Many additional studies will be required to dissect the complex effects of CDK4/6 inhibitors on human tumors, including those recently reviewed by Klein and colleagues (26), but these recent findings support the idea that these inhibitors may be more potent anticancer molecules than previously anticipated.

### Disclosure of Potential Conflicts of Interest

J. Sage reports receiving a commercial research grant from StemCentrx/Abbvie. No potential conflicts of interest were disclosed by the other author.

### References

- Burkhardt DL, Sage J. Cellular mechanisms of tumour suppression by the retinoblastoma gene. *Nat Rev Cancer* 2008;8:671–82.
- Dick FA, Rubin SM. Molecular mechanisms underlying RB protein function. *Nat Rev Mol Cell Biol* 2013;14:297–306.
- Dyson NJ. RB1: a prototype tumor suppressor and an enigma. *Genes Dev* 2016;30:1492–502.
- Dick FA, Goodrich DW, Sage J, Dyson NJ. Non-canonical functions of the RB protein in cancer. *Nat Rev Cancer* 2018;18:442–51.
- Sherr CJ, Beach D, Shapiro GI. Targeting CDK4 and CDK6: from discovery to therapy. *Cancer Discov* 2016;6:353–67.
- Finn RS, Martin M, Rugo HS, Jones S, Im SA, Gelmon K, et al. Palbociclib and letrozole in advanced breast cancer. *N Engl J Med* 2016;375:1925–36.
- Hortobagyi GN, Stemmer SM, Burris HA, Yap YS, Sonke GS, Paluch-Shimon S, et al. Ribociclib as first-line therapy for HR-positive, advanced breast cancer. *N Engl J Med* 2016;375:1738–48.
- Sledge GW Jr, Toi M, Neven P, Sohn J, Inoue K, Pivrot X, et al. MONARCH 2: abemaciclib in combination with fulvestrant in women with HR+/HER2-advanced breast cancer who had progressed while receiving endocrine therapy. *J Clin Oncol* 2017;35:2875–84.
- Goldman JW, Shi P, Reck M, Paz-Ares L, Koustenis A, Hurt KC. Treatment rationale and study design for the JUNIPER study: a randomized phase III study of abemaciclib with best supportive care versus erlotinib with best supportive care in patients with stage IV non-small-cell lung cancer with a detectable KRAS mutation whose disease has progressed after platinum-based chemotherapy. *Clin Lung Cancer* 2016;17:80–4.
- Dickler MN, Tolaney S, Rugo HS, Cortés J, Dieras V, Patt DA, et al. MONARCH 1, a phase 2 study of abemaciclib, a CDK4 and CDK6 inhibitor, as a single agent, in patients with refractory HR+/HER2-metastatic breast cancer. *Clin Cancer Res* 2017;23:5218–24.
- Goel S, DeCristo MJ, Watt AC, BrinJones H, Sceneay J, Li BB, et al. CDK4/6 inhibition triggers anti-tumour immunity. *Nature* 2017;548:471–5.
- Lu Y, Ussery GD, Muncaster MM, Gallie BL, Blanck G. Evidence for retinoblastoma protein (RB) dependent and independent IFN-gamma responses: RB coordinately rescues IFN-gamma induction of MHC class II gene transcription in noninducible breast carcinoma cells. *Oncogene* 1994;9:1015–9.
- Zhu X, Pattenden S, Bremner R. pRB is required for interferon-gamma-induction of the MHC class II alpha gene. *Oncogene* 1999;18:4940–7.
- Teo ZL, Versaci S, Dushyanthen S, Caramia F, Savas P, Mintoff CP, et al. Combined CDK4/6 and PI3Kalpha inhibition is synergistic and immunogenic in triple-negative breast cancer. *Cancer Res* 2017;77:6340–52.
- Deng J, Wang ES, Jenkins RW, Li S, Dries R, Yates K, et al. CDK4/6 inhibition augments antitumor immunity by enhancing T-cell activation. *Cancer Discov* 2018;8:216–33.
- Schaer DA, Beckmann RP, Dempsey JA, Huber L, Forest A, Amaladas N, et al. The CDK4/6 inhibitor abemaciclib induces a T cell inflamed tumor microenvironment and enhances the efficacy of PD-L1 checkpoint blockade. *Cell Rep* 2018;22:2978–94.
- Zhang J, Bu X, Wang H, Zhu Y, Geng Y, Nihira NT, et al. Cyclin D-CDK4 kinase destabilizes PD-L1 via cullin 3-SPOP to control cancer immune surveillance. *Nature* 2018;553:91–5.
- Bisi JE, Sorrentino JA, Roberts PJ, Tavares FX, Strum JC. Preclinical characterization of G1T28: a novel CDK4/6 inhibitor for reduction of chemotherapy-induced myelosuppression. *Mol Cancer Ther* 2016;15:783–93.
- He S, Roberts PJ, Sorrentino JA, Bisi JE, Storrie-White H, Tiessen RC, et al. Transient CDK4/6 inhibition protects hematopoietic stem cells from chemotherapy-induced exhaustion. *Sci Transl Med* 2017;9:eal3986.
- Roberts P, Lai A, Sorrentino J, Malik R. 29IN Trilaciclib (G1T28), a CDK4/6 inhibitor, enhances the efficacy of combination chemotherapy and immune checkpoint inhibitor treatment in preclinical models. *Ann Oncol* 2018;29:mdy046.013.
- Guan X, LaPak KM, Hennessey RC, Yu CY, Shakya R, Zhang J, et al. Stromal senescence by prolonged CDK4/6 inhibition potentiates tumor growth. *Mol Cancer Res* 2017;15:237–49.
- Hutcheson J, Witkiewicz AK, Knudsen ES. The RB tumor suppressor at the intersection of proliferation and immunity: relevance to disease immune evasion and immunotherapy. *Cell Cycle* 2015;14:3812–9.
- Amulic B, Knackstedt SL, Abu Abed U, Deigendesch N, Harbort CJ, Caffrey BE, et al. Cell-cycle proteins control production of neutrophil extracellular traps. *Dev Cell* 2017;43:449–62.
- Erpenbeck L, Schon MP. Neutrophil extracellular traps: protagonists of cancer progression? *Oncogene* 2017;36:2483–90.
- Spranger S, Gajewski TF. Impact of oncogenic pathways on evasion of antitumor immune responses. *Nat Rev Cancer* 2018;18:139–47.
- Klein ME, Kovatcheva M, Davis LE, Tap WD, Koff A. CDK4/6 inhibitors: the mechanism of action may not be as simple as once thought. *Cancer Cell* 2018;33:9–20.

### Authors' Contributions

**Conception and design:** J. Sage  
**Writing, review, and/or revision of the manuscript:** A.C. Chaikovsky, J. Sage  
**Administrative, technical, or material support (i.e., reporting or organizing data, constructing databases):** J. Sage  
**Study supervision:** J. Sage

### Acknowledgments

The authors thank members of the Sage lab and Laurent Le Cam for critical comments on the manuscript. This work was supported by the NIH (CA114102 and CA213273 to J. Sage) and the NSF (GRFP to A.C. Chaikovsky). J. Sage is the Harriet and Mary Zelencik Scientist in Children's Cancer and Blood Diseases.

Received April 12, 2018; revised May 17, 2018; accepted May 31, 2018; published first June 22, 2018.

# Molecular Cancer Research

## Beyond the Cell Cycle: Enhancing the Immune Surveillance of Tumors Via CDK4/6 Inhibition

Andrea C. Chaikovsky and Julien Sage

*Mol Cancer Res* 2018;16:1454-1457. Published OnlineFirst June 22, 2018.

**Updated version** Access the most recent version of this article at:  
doi:[10.1158/1541-7786.MCR-18-0201](https://doi.org/10.1158/1541-7786.MCR-18-0201)

**Cited articles** This article cites 26 articles, 8 of which you can access for free at:  
<http://mcr.aacrjournals.org/content/16/10/1454.full#ref-list-1>

**E-mail alerts** [Sign up to receive free email-alerts](#) related to this article or journal.

**Reprints and Subscriptions** To order reprints of this article or to subscribe to the journal, contact the AACR Publications Department at [pubs@aacr.org](mailto:pubs@aacr.org).

**Permissions** To request permission to re-use all or part of this article, use this link  
<http://mcr.aacrjournals.org/content/16/10/1454>.  
Click on "Request Permissions" which will take you to the Copyright Clearance Center's (CCC) Rightslink site.