

Highlights of This Issue 1

CELL CYCLE AND SENEESCENCE

- 3** PKC ϵ Controls Mitotic Progression by Regulating Centrosome Migration and Mitotic Spindle Assembly
Silvia Martini, Tanya Soliman, Giuliana Gobbi, Prisco Mirandola, Cecilia Carubbi, Elena Masselli, Giulia Pozzi, Peter J. Parker, and Marco Vitale
- 16** Cell Cycle-Dependent Tumor Engraftment and Migration Are Enabled by Aurora-A
Tony L.H. Chu, Marisa Connell, Lixin Zhou, Zhengcheng He, Jennifer Won, Helen Chen, Seyed M.R. Rahavi, Pooja Mohan, Oksana Nemirovsky, Abbas Fotovati, Miguel Angel Pujana, Gregor S.D. Reid, Torsten O. Nielsen, Nelly Pante, and Christopher A. Maxwell

CELL DEATH AND SURVIVAL

- 32** Differential Response of Glioma Stem Cells to Arsenic Trioxide Therapy Is Regulated by MNK1 and mRNA Translation
Jonathan B. Bell, Frank Eckerdt, Harshil D. Dhruv, Darren Finlay, Sen Peng, Seungchan Kim, Barbara Kroczyńska, Elspeth M. Beauchamp, Kristen Alley, Jessica Clymer, Stewart Goldman, Shi-Yuan Cheng, C. David James, Ichiro Nakano, Craig Horbinski, Andrew P. Mazar, Kristiina Vuori, Priya Kumthekar, Jeffrey Raizer, Michael E. Berens, and Leonidas C. Plataniias
- 47** Personalized siRNA-Nanoparticle Systemic Therapy using Metastatic Lymph Node Specimens Obtained with EBUS-TBNA in Lung Cancer
Tatsuya Kato, Daiyoon Lee, Huang Huang, William Cruz, Hideki Ujiie, Kosuke Fujino, Hironobu Wada, Priya Patel, Hsin-pei Hu, Kentaro Hirohashi, Takahiro Nakajima, Masaaki Sato, Mitsuhiro Kaji, Kichizo Kaga, Yoshiro Matsui, Juan Chen, Gang Zheng, and Kazuhiro Yasufuku
- 58** Heat Shock Protein 70 (Hsp70) Suppresses RIP1-Dependent Apoptotic and Necroptotic Cascades
Sharan R. Srinivasan, Laura C. Cesa, Xiaokai Li, Olivier Julien, Min Zhuang, Hao Shao, Jooho Chung, Ivan Maillard, James A. Wells, Colin S. Duckett, and Jason E. Gestwicki

CHROMATIN, EPIGENETICS, AND RNA REGULATION

- 69** Functional Impact of Chromatin Remodeling Gene Mutations and Predictive Signature for Therapeutic Response in Bladder Cancer
Jason E. Duex, Kalin E. Swain, Garrett M. Dancik, Richard D. Paucek, Charles Owens, Mair E.A. Churchill, and Dan Theodorescu
- 78** Divergent Activity of the Pseudogene *PTENP1* in ER-Positive and Negative Breast Cancer
Synnøve Yndestad, Eilin Austreid, Kai Ove Skafnesmo, Per Eystein Lønning, and Hans Petter Eikesdal

GENOMICS

- 90** HPV Integration in HNSCC Correlates with Survival Outcomes, Immune Response Signatures, and Candidate Drivers
Lada A. Koneva, Yanxiao Zhang, Shama Virani, Pelle B. Hall, Jonathan B. McHugh, Douglas B. Chepeha, Gregory T. Wolf, Thomas E. Carey, Laura S. Rozek, and Maureen A. Sartor
- 103** A Large-Scale RNAi Screen Identifies SGK1 as a Key Survival Kinase for GBM Stem Cells
Shreya Kulkarni, Surbhi Goel-Bhattacharya, Sejuti Sengupta, and Brent H. Cochran
- 115** Genomic Gain of 16p13.3 in Prostate Cancer Predicts Poor Clinical Outcome after Surgical Intervention
Yogesh M. Bramhecha, Karl-Philippe Guérard, Shaghayegh Rouzbeh, Eleonora Scarlata, Fadi Brimo, Simone Chevalier, Lucie Hamel, Alice Dragomir, Armen G. Aprikian, and Jacques Lapointe

ONCOGENES AND TUMOR SUPPRESSORS

- 124** HIF-3 α Promotes Metastatic Phenotypes in Pancreatic Cancer by Transcriptional Regulation of the RhoC-ROCK1 Signaling Pathway
Xianfei Zhou, Xingjun Guo, Meiyuan Chen, Chencheng Xie, and Jianxin Jiang

Table of Contents

135 Malignant Phenotypes in Metastatic Melanoma are Governed by SR-BI and its Association with Glycosylation and STAT5 Activation

Katharina Kinslechner, David Schörghofer, Birgit Schütz, Maria Vallianou, Bettina Wingelhofer, Wolfgang Mikulits, Clemens Röhl, Markus Hengstschläger, Richard Moriggl, Herbert Stangl, and Mario Mikula

SIGNAL TRANSDUCTION

147 Functional Genomics Approach Identifies Novel Signaling Regulators of TGF α Ectodomain Shedding

Jennifer L. Wilson, Eirini Kefaloyianni, Lauren Stopfer, Christina Harrison, Venkata S. Sabbiseti, Ernest Fraenkel, Douglas A. Lauffenburger, and Andreas Herrlich

162 NF κ B-Mediated Invasiveness in CD133⁺ Pancreatic TICs Is Regulated by Autocrine and Paracrine Activation of IL1 Signaling

Alice Nomura, Vineet K. Gupta, Patricia Dauer, Nikita S. Sharma, Vikas Dudeja, Nipun Merchant, Ashok K. Saluja, and Sulagna Banerjee

173 Crk Tyrosine Phosphorylation Regulates PDGF-BB-inducible Src Activation and Breast Tumorigenicity and Metastasis

Sushil Kumar, Bin Lu, Viralkumar Davra, Peter Hornbeck, Kazuya Machida, and Raymond B. Birge

CORRECTION

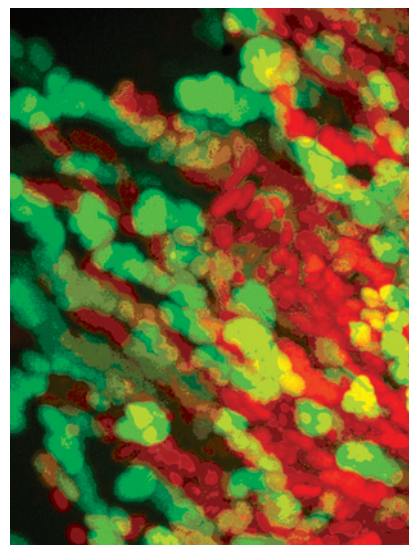
184 Correction: Inhibition of mTORC1 Kinase Activates Smads 1 and 5 but Not Smad8 in Human Prostate Cancer Cells, Mediating Cytostatic Response to Rapamycin

 AC icon indicates AuthorChoice

For more information please visit www.aacrjournals.org

ABOUT THE COVER

Cell cycle progression and increased migratory potential are hallmarks of human carcinoma cells, especially in breast cancer. In this issue, Chu and colleagues (beginning on page 16) demonstrate that epithelial cell proliferation and migration are connected by a requirement for the acquisition of microtubule nucleation capacity at the centrosome. The cover image, which was artistically rendered, shows a time overlay for images of immortalized mouse mammary cells, which express a fluorescence indicator for cell cycle progression. Images were taken every 30 minutes, for a total of 24 hours, as the cells migrated into a scratch wound. Fluorescence in the nucleus indicates the cell cycle phase at the time of imaging, with a red nucleus indicating the cell is in G1 phase, a yellow nucleus indicating the cell is in G1-S phase and a green nucleus indicating the cell is in S-G2-M phase. The connection between cell cycle progression and migration in epithelial cells likely explains the strong relationship between cell populations that express an EMT signature and those with an augmented tumor-initiating potential.



Molecular Cancer Research

16 (1)

Mol Cancer Res 2018;16:1-184.

Updated version Access the most recent version of this article at:
<http://mcr.aacrjournals.org/content/16/1>

E-mail alerts [Sign up to receive free email-alerts](#) related to this article or journal.

Reprints and Subscriptions To order reprints of this article or to subscribe to the journal, contact the AACR Publications Department at pubs@aacr.org.

Permissions To request permission to re-use all or part of this article, use this link <http://mcr.aacrjournals.org/content/16/1>. Click on "Request Permissions" which will take you to the Copyright Clearance Center's (CCC) Rightslink site.