

**Highlights of This Issue 391**
**REVIEW**

- 393** Clinically Relevant microRNAs in Ovarian Cancer  
Shu Zhang, Zhen Lu, Anna K. Unruh, Cristina Ivan,  
Keith A. Baggerly, George A. Calin, Zongfang Li,  
Robert C. Bast Jr, and Xiao-Feng Le

**CELL CYCLE AND SENESCENCE**

- 402** DNA-Directed Polymerase Subunits Play a Vital Role in Human Telomeric Overhang Processing  
Raffaella Diotti, Sampada Kalan, Anastasiya Matveyenko,  
and Diego Loayza

**CELL DEATH AND SURVIVAL**


- 411** Sensitizing B- and T-cell Lymphoma Cells to Paclitaxel/Abraxane-Induced Death by AS101 via Inhibition of the VLA-4–IL10–Survivin Axis  
Hila Danoch, Yona Kalechman, Michael Albeck,  
Dan L. Longo, and Benjamin Sredni
- 423** Prometastatic NEDD9 Regulates Individual Cell Migration via Caveolin-1-Dependent Trafficking of Integrins  
Polina Y. Kozyulina, Yuriy V. Loskutov,  
Varvara K. Kozyreva, Anuradha Rajulapati, Ryan J. Ice,  
Brandon C. Jones, and Elena N. Pugacheva
- 439** MUC1 Promoter-Driven DTA as a Targeted Therapeutic Strategy against Pancreatic Cancer  
Renee M. Tholey, Shruti Lal, Masaya Jimbo,  
Richard A. Burkhart, Fernando F. Blanco,  
Joseph A. Cozzitorto, Josh D. Eisenberg, Wei Jiang,  
Christine A. Iacobuzio-Donahue, Agnieszka K. Witkiewicz,  
Melissa Gilbert, Charles J. Yeo, Jonathan R. Brody,  
Janet A. Sawicki, and Jordan M. Winter

**CHROMATIN, GENE, AND RNA REGULATION**

- 449** MUC1-C Induces the LIN28B→LET-7→HMGA2 Axis to Regulate Self-Renewal in NSCLC  
Maroof Alam, Rehan Ahmad, Hasan Rajabi, and  
Donald Kufe

- 461** Histone Methyltransferase hSETD1A Is a Novel Regulator of Metastasis in Breast Cancer  
Tal Salz, Changwang Deng, Christine Pampo,  
Dietmar Siemann, Yi Qiu, Kevin Brown, and  
Suming Huang

**DNA DAMAGE AND REPAIR**

- 470** Alternative NHEJ Pathway Components Are Therapeutic Targets in High-Risk Neuroblastoma  
 Erika A. Newman, Fujia Lu, Daniela Bashllari, Li Wang,  
Anthony W. Opipari, and Valerie P. Castle

**GENOMICS**

- 483** RhoC Is an Unexpected Target of RhoGDI2 in Prevention of Lung Colonization of Bladder Cancer  
Erin M. Griner, Garrett M. Dancik, James C. Costello,  
Charles Owens, Sunny Guin, Michael G. Edwards,  
David L. Brautigan, and Dan Theodorescu
- 493** Lymphocyte Invasion in IC10/Basal-Like Breast Tumors Is Associated with Wild-Type TP53  
David Quigley, Laxmi Silwal-Pandit, Ruth Dannenfeler,  
Anita Langerød, Hans Kristian Moen Vollan, Charles Vaske,  
Josie Ursini Siegel, Olga Troyanskaya, Suet-Feung Chin,  
Carlos Caldas, Allan Balmain, Anne-Lise Børresen-Dale,  
and Vessela Kristensen
- 502** The Tyrosine Kinase Adaptor Protein FRS2 Is Oncogenic and Amplified in High-Grade Serous Ovarian Cancer  
Leo Y. Luo, Eejung Kim, Hiu Wing Cheung, Barbara A. Weir,  
Gavin P. Dunn, Rhine R. Shen, and William C. Hahn

**ONCOGENES AND TUMOR SUPPRESSORS**

- 510** Enhanced Tumorigenic Potential of Colorectal Cancer Cells by Extracellular Sulfatases  
Carolina M. Vicente, Marcelo A. Lima, Edwin A. Yates,  
Helena B. Nader, and Leny Toma
- 524** Elevated Slit2 Activity Impairs VEGF-Induced Angiogenesis and Tumor Neovascularization in EphA2-Deficient Endothelium  
Victoria Youngblood, Shan Wang, Wenqiang Song,  
Debra Walter, Yoonha Hwang, Jin Chen, and  
Dana M. Brantley-Sieders

# Table of Contents

**538** Survival Outcome and EMT Suppression Mediated by a Lectin Domain Interaction of Endo180 and CD147



Mercedes Rodriguez-Teja, Julian H. Gronau, Ai Minamidate, Steven Darby, Luke Gaughan, Craig Robson, Francesco Mauri, Jonathan Waxman, and Justin Sturge

**548** A Vascular Model of Tsc1 Deficiency Accelerates Renal Tumor Formation with Accompanying Hemangiosarcomas

Jarrett D. Leech, Stephen H.T. Lammers, Sam Goldman, Neil Auricchio, Roderick T. Bronson, David J. Kwiatkowski, and Mustafa Sahin

## SIGNAL TRANSDUCTION

**556** HIF1 $\alpha$  Regulates mTOR Signaling and Viability of Prostate Cancer Stem Cells

Maximilian Marhold, Erwin Tomasich, Ahmed El-Gazzar, Gerwin Heller, Andreas Spittler, Reinhard Horvat, Michael Krainer, and Peter Horak

**565** miR-629 Targets TRIM33 to Promote TGF $\beta$ /Smad Signaling and Metastatic Phenotypes in ccRCC

Kentaro Jingushi, Yuko Ueda, Kaori Kitae, Hiroaki Hase, Hiroshi Egawa, Ikumi Ohshio, Ryoji Kawakami, Yuri Kashiwagi, Yohei Tsukada, Takumi Kobayashi, Wataru Nakata, Kazutoshi Fujita, Motohide Uemura, Norio Nonomura, and Kazutake Tsujikawa

**575** The TWEAK Receptor Fn14 Is an Src-Inducible Protein and a Positive Regulator of Src-Driven Cell Invasion

Emily Cheng, Timothy G. Whitsett, Nhan L. Tran, and Jeffrey A. Winkles

**584** p53 Mutation Directs AURKA Overexpression via miR-25 and FBXW7 in Prostatic Small Cell Neuroendocrine Carcinoma

Zhen Li, Yin Sun, Xufeng Chen, Jill Squires, Behdokht Nowroozizadeh, Chaozhao Liang, and Jiaoti Huang

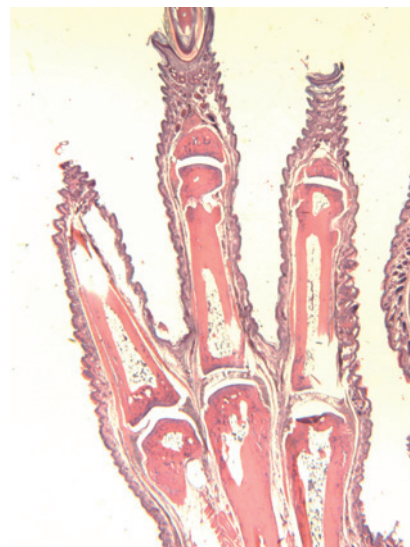


AC icon indicates Author Choice

For more information please visit [www.aacrjournals.org](http://www.aacrjournals.org)

## ABOUT THE COVER

Tuberous sclerosis complex (TSC) is associated with hamartomas in several organs in patients, including the brain, kidneys, heart, and skin. The cover shows hematoxylin and eosin staining of a paw section from an 8-week-old wild-type mouse. At the same age, *Tsc1<sup>cc</sup> DARPP Cre* mouse displays paw lesions with multiple hemangiosarcomas. Please see the article by Leech and colleagues (beginning on page 548) for more information.



# Molecular Cancer Research

13 (3)

*Mol Cancer Res* 2015;13:391-591.

**Updated version** Access the most recent version of this article at:  
<http://mcr.aacrjournals.org/content/13/3>

**E-mail alerts** [Sign up to receive free email-alerts](#) related to this article or journal.

**Reprints and Subscriptions** To order reprints of this article or to subscribe to the journal, contact the AACR Publications Department at [pubs@aacr.org](mailto:pubs@aacr.org).

**Permissions** To request permission to re-use all or part of this article, use this link <http://mcr.aacrjournals.org/content/13/3>. Click on "Request Permissions" which will take you to the Copyright Clearance Center's (CCC) Rightslink site.